



2023-2024



Pricing





Purity – Noble China



**SHAPED BY
RESPONSIBILITY**
ISO 14001 + ISO 50001
CERTIFIED



Quality Assured



Quality Assured



EDGE CHIP
RESISTANCE



GLAZE
DAMAGE
RESISTANCE



STACKABILITY



DISHWASHER
SAFE



MICROWAVE
SAFE



FREEZER
SAFE



OVEN
SAFE



HEAT / CHILL
RETENTION



THERMAL
SHOCK
RESISTANCE

A premium collection of classic and modern shapes with a pure bone china white lustre brings pure elegance and a timeless appeal to the tabletop. A refined and delicate profile and high levels of strength and durability make it the ideal solution for professional long term use.

*See following page for full contact details

Noble China – Refined, Alumina Strengthened Vitrified Porcelain

Ultra Smooth High Fired Glaze

The exceptionally high firing temperature of over 1,400c delivers an exceptionally hard, strong and ultra smooth glaze which is resistant to abrasion. This results in a surface which is easy to clean and does not suffer from permanent marking, therefore, showing your food off to perfection. The extended life delivers excellent cost in use.

Bone China White Vitrified Porcelain

Purity is fired in the kiln to over 1,400c making it extremely dense, very strong and resistant to the ingress of water and thus a very hygienic surface on which to serve food. The firing temperature and profile delivers a fully vitrified porcelain which complies with the performance requirements of BS4034 Vitrified Hotelware.

Alumina Strengthened

Purity includes the addition of Alumina which helps enhance the bone china white lustre and conveys exceptional strength and durability. This helps to achieve excellent cost in use on a refined, thinner profile for the perfect fine dining experience.

Designed for Performance

Purity has been design engineered with performance and functionality in mind to withstand the rigours of a busy commercial environment. Rounded, strong edge profiles prevent chipping and the stackability of key shapes aids space saving and back of house storage, resulting in less breakages.

Optimum Heat Retention

The dense nature of the Purity body which is created through the firing process and vitrification means the product will hold on to heat for longer periods of time, therefore, keeping food and drink at an optimum temperature during food service.



Dishwasher, Oven, Microwave and Freezer Safe

Purity has been designed and developed to be highly resistant to the detergents and chemicals used in industrial dishwashers. The very high temperature firing makes all of our products oven safe to the maximum temperature of a commercial oven, however, to prolong the life of your product we do not recommend a very extreme/abrupt temperature change of greater than +/- 220K.

Shaped by Responsibility

Quality assurance is a major factor in the production of Purity products and this is reflected through the commitment to increase the yields of finished products and thus reduce the raw material consumption. Autonomous, highly efficient energy production generates electricity and heat. Enhanced environmental performance is achieved for our customers through our environmental programmes and we are certified to International Environmental Management Systems ISO 14001 and Energy Management ISO 50001.

5 Year Edge Chip Warranty and 3 Year Limited Glaze Abrasion Warranty

The performance of the product and glaze is outstanding and has been designed to withstand the demands of busy commercial kitchens and restaurants.

***For full details please use the following email: chip.glazewarranty@artis-uk.com to request a warranty registration form and a copy of the warranty conditions.**

Not Applicable to Playground products, or for Hire Companies.





The Gallery

A premium collection of exquisitely decorated contemporary plates and bowls provide the perfect canvas for your culinary masterpieces.

A myriad of designs cleverly combine texture and colour to enhance and showcase the natural beauty of the food.



31-12-707



31-12-710



31-11-710



31-12-712



31-12-713



31-11-715

Code	Dimensions in cm	Description	Pack	GoldPlas® Rack Code
31-12-707	31d	Coupe Plate - Soft Gray	6	GP-PR81
31-12-710	29d	Coupe Bowl - Soft Gray	6	GP-PR81
31-11-710	25d	Stacking Plate - Soft Gray	6	GP-PR81

Code	Dimensions in cm	Description	Pack	GoldPlas® Rack Code
31-12-712	31d	Coupe Plate - Terrazzo	6	GP-PR81
31-12-713	29d	Coupe Bowl - Terrazzo	6	GP-PR81
31-11-715	25d	Stacking Plate - Terrazzo	6	GP-PR81



31-12-714



31-12-716



31-11-716



31-12-723



31-12-724



31-11-720

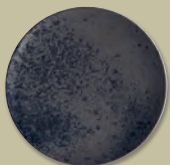


31-12-721

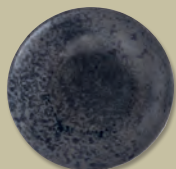
Code	Dimensions in cm	Description	Pack	GoldPlas® Rack Code
31-12-714	31d	Coupe Plate - Natural	6	GP-PR81
31-12-716	29d	Coupe Bowl - Natural	6	GP-PR81
31-11-716	25d	Stacking Plate - Natural	6	GP-PR81

Code	Dimensions in cm	Description	Pack	GoldPlas® Rack Code
31-12-723	30d	Coupe Plate - Sandstone Beige*	6	GP-PR81
31-12-724	30d	Coupe Bowl - Sandstone Beige*	6	GP-PR81
31-11-720	31d	Coupe Plate - Purity Pearls Gold	6	GP-PR81
31-12-721	29d	Coupe Bowl - Purity Pearls Gold	6	GP-PR81

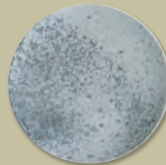
* Available on Bauscher White Body



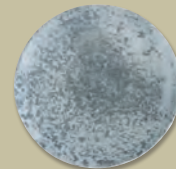
31-12-717



31-12-718



31-12-719



31-12-720

Code	Dimensions in cm	Description	Pack	GoldPlas® Rack Code
31-12-717	30d	Coupe Plate - Sandstone Black*	6	GP-PR81
31-12-718	30d	Coupe Bowl - Sandstone Black*	6	GP-PR81

Code	Dimensions in cm	Description	Pack	GoldPlas® Rack Code
31-12-719	30d	Coupe Plate - Sandstone Gray*	6	GP-PR81
31-12-720	30d	Coupe Bowl - Sandstone Gray*	6	GP-PR81

* Available on Bauscher White Body



31-12-702



31-12-705



31-11-730



31-12-731



31-11-900



31-12-711

Code	Dimensions in cm	Description	Pack	GoldPlas® Rack Code
31-12-702	31d	Coupe Plate - Purity Pearls Pink	6	GP-PR81
31-12-705	29d	Coupe Bowl - Purity Pearls Pink	6	GP-PR81
31-11-730	31d	Coupe Plate - Purity Pearls Copper	6	GP-PR81

Code	Dimensions in cm	Description	Pack	GoldPlas® Rack Code
31-12-731	29d	Coupe Bowl - Purity Pearls Copper	6	GP-PR81
31-11-900	31d	Coupe Plate - Purity Pearls Dark	6	GP-PR81
31-12-711	29d	Coupe Bowl - Purity Pearls Dark	6	GP-PR81

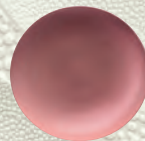


Purity Pearls Pink – A stylish and contemporary colourway, combining subtle texture with the softness of the on trend pink colour palette.

Classic and refined shapes combined with elegant decoration deliver exceptional food presentation with a decadent feel.



Purity Pearls Pink



31-11-706
32d

31-11-707
29d

31-11-708
29d

31-11-709
24d

31-12-702
31d

31-12-703
27d

31-12-704
16d

31-12-705
29d

31-12-706
24d

31-10-703
34 x 20

31-10-704
18 x 9

Code	Dimensions in cm	Capacity	Description	Pack	GoldPlas® Rack Code
31-11-706	32d	-	Rimmed Plate	6	GP-PR81
31-11-707	29d	-	Rimmed Plate	6	GP-PR81
31-11-708	29d	50cl 17½oz	Rimmed Bowl	6	GP-PR81
31-11-709	24d	32cl 11½oz	Rimmed Bowl	6	GP-PR81
31-12-702	31d	-	Coupe Plate	6	GP-PR81
31-12-703	27d	-	Coupe Plate	6	GP-PR81

Code	Dimensions in cm	Capacity	Description	Pack	GoldPlas® Rack Code
31-12-704	16d	-	Coupe Plate	12	GP-PR81
31-12-705	29d	-	Coupe Bowl	6	GP-PR81
31-12-706	24d	-	Coupe Bowl	6	GP-PR81
31-10-703	34 x 20	-	Rectangular Plate	6	GP-PR81
31-10-704	18 x 9	-	Rectangular Plate	12	GP-PR81



Purity Pearls Dark –
Dark and dramatic,
the deep blue colour
contrasts perfectly
with Purity Pearls
White and Pink.



Purity Pearls Dark



31-11-742 32d
31-11-743 29d



31-12-742 29d
31-12-743 24d



31-11-900 31d
31-11-711 27d
31-11-712 16d



31-12-711 29d
31-12-708 24d



31-10-711
34 x 20



31-10-712
18 x 9



31-14-711
16d

Code	Dimensions in cm	Capacity	Description	Pack	GoldPlas® Rack Code
31-11-742	32d	-	Rimmed Plate	6	GP-PR81
31-11-743	29d	-	Rimmed Plate	6	GP-PR81
31-12-742	29d	50cl 17½oz	Rimmed Bowl	6	GP-PR81
31-12-743	24d	32cl 11¼oz	Rimmed Bowl	6	GP-PR81
31-11-900	31d	-	Coupe Plate	6	GP-PR81
31-11-711	27d	-	Coupe Plate	6	GP-PR81

Code	Dimensions in cm	Capacity	Description	Pack	GoldPlas® Rack Code
31-11-712	16d	-	Coupe Plate	12	GP-PR81
31-12-711	29d	-	Coupe Bowl	6	GP-PR81
31-12-708	24d	-	Coupe Bowl	6	GP-PR81
31-10-711	34 x 20	-	Rectangular Plate	6	GP-PR81
31-10-712	18 x 9	-	Rectangular Plate	12	GP-PR81
31-14-711	16d	-	Saucer	12	GP-PR81



Purity Pearls Copper -
A striking design
combining the elegant
metallic copper colour
with a subtle textured
surface decoration.



Purity Pearls Copper



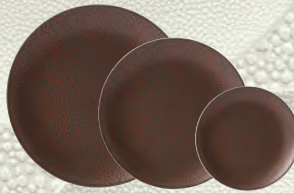
31-11-746
32d

31-11-747
29d



31-12-746
29d

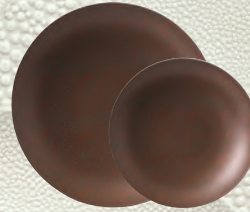
31-12-747
24d



31-11-730
31d

31-11-731
27d

31-11-732
16d



31-12-731
29d

31-12-732
24d



31-10-731
34 x 20



31-10-732
18 x 9



31-14-731
16d

Code	Dimensions in cm	Capacity	Description	Pack	GoldPlas® Rack Code
31-11-746	32d	-	Rimmed Plate	6	GP-PR81
31-11-747	29d	-	Rimmed Plate	6	GP-PR81
31-12-746	29d	50cl 17½oz	Rimmed Bowl	6	GP-PR81
31-12-747	24d	32cl 11¼oz	Rimmed Bowl	6	GP-PR81
31-11-730	31d	-	Coupe Plate	6	GP-PR81
31-11-731	27d	-	Coupe Plate	6	GP-PR81

Code	Dimensions in cm	Capacity	Description	Pack	GoldPlas® Rack Code
31-11-732	16d	-	Coupe Plate	12	GP-PR81
31-12-731	29d	-	Coupe Bowl	6	GP-PR81
31-12-732	24d	-	Coupe Bowl	6	GP-PR81
31-10-731	34 x 20	-	Rectangular Plate	6	GP-PR81
31-10-732	18 x 9	-	Rectangular Plate	12	GP-PR81
31-14-731	16d	-	Saucer	12	GP-PR81

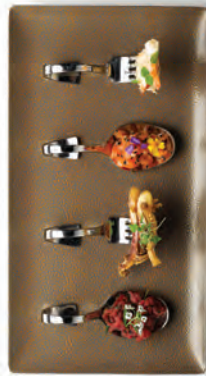


Code	Dimensions in cm	Capacity	Description	Pack	
A	31-11-730	31d	-	Purity Pearls Copper Coupe Plate	6
B	31-11-732	18d	-	Purity Pearls Copper Coupe Plate	12
C	31-12-732	24d	-	Purity Pearls Copper Coupe Bowl	6
D	31-14-731	16d	-	Purity Pearls Copper Combi Saucer	12
E	31-11-702	16d	-	Purity Pearls Light Coupe Plate	12
F	31-13-110	5.3 x 8.4d	19cl 6%oz	Purity Bowl	12
G	31-19-112	8.6d	-	Purity lid for Bowl	12
H	31-16-101	13.9 x 7.4d	10cl 3½oz	Purity Sauce Boat	6

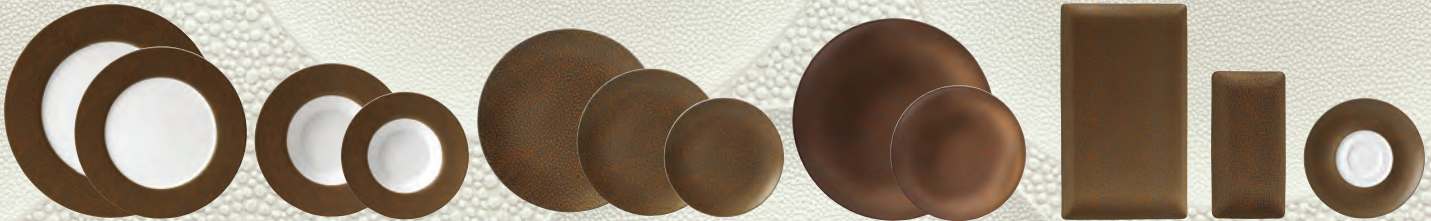
Code	onix	Dimensions in cm	Capacity	Description	Pack
I	31-12-104	18d	-	Purity Oval Plate	12
J	15-37-101	5.4h x 10.4d	27cl 9½oz	Thermic Round Pot with Handles •	2
K	12-18-121	20.7h x 10.7d	62cl 21¼oz	1924 Gin Goblet	12
L	46-85-307	10.3h x 7.7d	30cl 10½oz	Antique Copper Julep Cup with Nickel Lining	1
N	41-00-013	25	-	Firenze Table Knife	12
O	41-11-012	20	-	Firenze Table Fork	12



Purity Pearls Gold –
A stylish design combining the stunning metallic gold colour with the subtle textured surface finish.



Purity Pearls Gold



31-11-744
32d

31-11-745
29d

31-12-744
29d

31-12-745
24d

31-11-720
31d

31-11-721
27d

31-11-722
16d

31-12-721
29d

31-12-722
24d

31-10-721
34 x 20

31-10-722
18 x 9

31-14-721
16d

Code	Dimensions in cm	Capacity	Description	Pack	GoldPlas® Rack Code
31-11-744	32d	-	Rimmed Plate	6	GP-PR81
31-11-745	29d	-	Rimmed Plate	6	GP-PR81
31-12-744	29d	50cl 17½oz	Rimmed Bowl	6	GP-PR81
31-12-745	24d	32cl 11¼oz	Rimmed Bowl	6	GP-PR81
31-11-720	31d	-	Coupe Plate	6	GP-PR81
31-11-721	27d	-	Coupe Plate	6	GP-PR81

Code	Dimensions in cm	Capacity	Description	Pack	GoldPlas® Rack Code
31-11-722	16d	-	Coupe Plate	12	GP-PR81
31-12-721	29d	-	Coupe Bowl	6	GP-PR81
31-12-722	24d	-	Coupe Bowl	6	GP-PR81
31-10-721	34 x 20	-	Rectangular Plate	6	GP-PR81
31-10-722	18 x 9	-	Rectangular Plate	12	GP-PR81
31-14-721	16d	-	Saucer	12	GP-PR81



	Code	Dimensions in cm	Capacity	Description	Pack
A	31-11-722	16d	-	Purity Pearls Gold Coupe Plate	12
B	31-12-722	24d	-	Purity Pearls Gold Coupe Bowl	6
C	31-10-721	34 x 20	-	Purity Pearls Gold Rectangular Plate	6
D	31-10-722	18 x 9	-	Purity Pearls Gold Rectangular Plate	12

	Code	Dimensions in cm	Capacity	Description	Pack
E	31-10-702	18 x 9	-	Pearls Light Rectangular Plate	12
F	15-37-100	4.2h x 10.8d	17.5cl 6oz	Thermic Wok •	2
G	15-18-141	14.7h x 5.2d	10cl 3½oz	No.2 Mini Oil/Vinegar Bottle •	24
H	14-31-143	10.6h x 8.6d	34cl 12oz	Atelier Prestige Double Old Fashioned	24



Purity Pearls Light –
White texture of subtle pearl like drops adds a premium finish to the collection, designed to be mixed with all the colours in the collection to give a feeling of opulence.



Purity Pearls Light



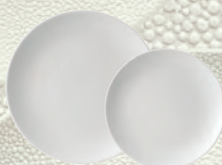
31-11-740
32d

31-11-741
29d



31-12-740
29d

31-12-741
24d



31-11-901
31d

31-11-703
27d

31-11-702
16d



31-12-701
29d

31-12-709
24d

31-10-701
34 x 20

31-10-702
18 x 9



31-14-703
16d

Code	Dimensions in cm	Capacity	Description	Pack	GoldPlas® Rack Code
31-11-740	32d	-	Rimmed Plate	6	GP-PR81
31-11-741	29d	-	Rimmed Plate	6	GP-PR81
31-12-740	29d	50cl 17½oz	Rimmed Bowl	6	GP-PR81
31-12-741	24d	32cl 11¼oz	Rimmed Bowl	6	GP-PR81
31-11-901	31d	-	Coupe Plate	6	GP-PR81
31-11-703	27d	-	Coupe Plate	6	GP-PR81

Code	Dimensions in cm	Capacity	Description	Pack	GoldPlas® Rack Code
31-11-702	16d	-	Coupe Plate	12	GP-PR81
31-12-701	29d	-	Coupe Bowl	6	GP-PR81
31-12-709	24d	-	Coupe Bowl	6	GP-PR81
31-10-701	34 x 20	-	Rectangular Plate	6	GP-PR81
31-10-702	18 x 9	-	Rectangular Plate	12	GP-PR81
31-14-703	16d	-	Saucer	12	GP-PR81



	Code	Dimensions in cm	Capacity	Description	Pack
A	31-11-901	31d	-	Purity Pearls Light Coupe Plate	6
B	31-11-702	16d	-	Purity Pearls Light Coupe Plate	12
C	31-12-709	24d	-	Purity Pearls Light Coupe Bowl	6
D	31-14-703	16d	-	Purity Pearls Light Combi Saucer	12
E	31-10-702	18 x 9	-	Purity Pearls Light Rectangular Plate	12
F	31-19-106	10.9 x 19.3d	40cl 14oz	Purity Teapot	6
G	31-14-102	5.7 x 6d	15cl 5¼oz	Purity Jug	12

	Code	Dimensions in cm	Capacity	Description	Pack
H	31-14-111	10.8 x 6.7d	35cl 12¼oz	Purity Cup	12
I	15-18-140	14h x 5.7d	10cl 3½oz	No.1 Square Mini Oil/Vinegar Bottle	24
J	15-37-102	9.3h x 9.5d	25cl 8¾oz	Thermic Pot with Handles & Lid	2
K	15-42-112	24h x 6.2d	20cl 7oz	Incanto Flute	24
L	15-41-122	10.7h x 7.7d	35cl 12¼oz	Incanto Double Old Fashioned	24
M	44-10-001	23	-	Tulip Table Knife	12
N	44-11-001	20	-	Tulip Table Fork	12



Create

A refined scalloped edge combined with a narrow rim embossed detail gives Create its unique and individual style. Coupe shapes and contemporary cups and saucers give a modern twist on a vintage look, combined with the purest of white lustre for all of your culinary delights.



Purity Noble China



Narrow Rimmed Plate

Code	Dimensions in cm	Capacity	Description	Pack	GoldPlas® Rack Code
31-11-129	31d	-	Narrow Rimmed Plate	6	GP-PR81
31-11-131	29d	-	Narrow Rimmed Plate	6	GP-PR81
31-11-132	26d	-	Narrow Rimmed Plate	6	GP-PR81
31-11-134	23d	-	Narrow Rimmed Plate	6	GP-PR81
31-11-135	21d	-	Narrow Rimmed Plate	6	GP-PR81
31-11-136	16d	-	Narrow Rimmed Plate	12	GP-PR81

Narrow Oval Rimmed Plate

Code	Dimensions in cm	Capacity	Description	Pack	GoldPlas® Rack Code
31-12-124	33 x 22	-	Narrow Oval Rimmed Plate	6	GP-PR81



Narrow Rimmed Bowl

Code	Dimensions in cm	Capacity	Description	Pack	GoldPlas® Rack Code
31-12-125	28d	75cl 26½oz	Narrow Rimmed Bowl	6	GP-PR81
31-12-126	24d	27cl 9½oz	Narrow Rimmed Bowl	6	GP-PR81



Bowl

Code	Dimensions in cm	Capacity	Description	Pack	GoldPlas® Rack Code
31-13-126	5.5 x 20d	60cl 21oz	Bowl	6	GP-PR81
31-13-127	4.6 x 15.1d	30cl 10½oz	Bowl	6	GP-PR81



31-14-140



31-14-142



31-14-143



31-14-145

31-14-141

31-14-144

Cups, Mugs and Saucers

Code	Dimensions in cm	Capacity	Description	Pack	GoldPlas® Rack Code
31-14-140	4.7 x 7.1d	8cl 2¾oz	Cup Fits Saucer 31-14-141	12	36E1
31-14-142	6.2 x 10.4d	25½cl 9oz	Cup Fits Saucer 31-14-144	12	16E1
31-14-143	6.6 x 11.4d	33cl 11½oz	Cup Fits Saucer 31-14-144	12	9E1
31-14-145	8.9 x 9.8d	32cl 11¼oz	Mug Fits Saucer 31-14-144	6	16E1
31-14-141	13d	-	Espresso Saucer	12	9E1
31-14-144	16d	-	Combi Saucer	12	GP-PR81





NEW



Reflections

Sparkling like a diamond, an elegant embossment featured on our exquisite Purity shapes and in our premium Noble China white body.

A graphic, faceted relief design that reflects the light differently at every angle delivering food presentation of exceptional quality.



Purity Noble China



Rimmed Plate

Code	Dimensions in cm	Description	Pack	GoldPlas® Rack Code
31-11-145	32d	Rimmed Plate	6	GP-PR81
31-11-144	29d	Rimmed Plate	6	GP-PR81
31-11-143	26d	Rimmed Plate	6	GP-PR81
31-11-148	24d	Rimmed Plate	6	GP-PR81
31-11-142	22d	Rimmed Plate	6	GP-PR81
31-11-141	17d	Rimmed Plate	12	GP-PR81



Rimmed Oval Plate

Code	Dimensions in cm	Description	Pack	GoldPlas® Rack Code
31-12-138	38.2 x 27.9	Rimmed Oval Plate	6	GP-PR81
31-12-137	33.1 x 24.5	Rimmed Oval Plate	6	GP-PR81
31-12-136	24 x 17.7	Rimmed Oval Plate	6	GP-PR81
31-12-135	18.1 x 13.2	Rimmed Oval Plate	12	GP-PR81

NEW



Rimmed Bowl

Code	Dimensions in cm	Capacity	Description	Pack	GoldPlas® Rack Code
31-11-147	29d	50cl 17½oz	Rimmed Bowl	6	GP-PR81
31-11-146	24d	32cl 11¼oz	Rimmed Bowl	6	GP-PR81
31-11-149	20d	20cl 7oz	Rimmed Bowl	12	GP-PR81

31-13-109

31-14-111
31-14-108
31-14-106

31-14-105

31-14-116



31-14-109



31-14-112



31-14-159
31-14-158



31-14-160

Cups and Saucers

Code	Dimensions in cm	Capacity	Description	Pack	GoldPlas® Rack Code
31-13-109	5.6 x 6.3d	9cl 3¼oz	Cup no Handle Fits Saucer 31-14-158 and 31-14-160	12	GP-PR81
31-14-111	10.8 x 6.7d	35cl 12¼oz	Cup Fits Saucer 31-14-159 and 31-14-160	12	9E1
31-14-108	6.2 x 8.7d	22cl 7¾oz	Cup Fits Saucer 31-14-159	12	16E1
31-14-106	5.6 x 6.3d	9cl 3¼oz	Cup Fits Saucer 31-14-158	12	25E1
31-14-105	6.7 x 7.5d	22cl 7¾oz	Cup Stackable Fits Saucer 31-14-159	6	GP-CR20
31-14-116	5.5 x 5.8d	9cl 3¼oz	Cup Stackable Fits Saucer 31-14-158	6	GP-PR81
31-14-109	4.9 x 10.8d	24cl 8½oz	Tea Cup Fits Saucer 31-14-160	12	GP-CR16
31-14-112	9.3 x 9d	35cl 12¼oz	Mug Fits Saucer 31-14-115	6	16E1
31-14-159	16d	-	Saucer	12	GP-PR81
31-14-158	13.5d	-	Saucer	12	9E1
31-14-160	16.5d	-	Saucer 2 Wells	12	GP-PR81



Purity White

A collection of refined white contemporary and classic shapes made from the Noble China premium white body. It combines all the benefits of a fine delicate profile, excellent levels of durability and a stunning bone china white glaze finish.



Coupe Plate

Code	Dimensions in cm	Description	Pack	GoldPlas® Rack Code
31-11-123	31d	Coupe Plate	6	GP-PR81
31-12-110	29d	Coupe Plate	6	GP-PR81
31-11-122	27d	Coupe Plate	6	GP-PR81
31-11-121	21d	Coupe Plate	6	GP-PR81
31-11-120	16d	Coupe Plate	12	GP-PR81



Rimmed Plate

Code	Dimensions in cm	Description	Pack	GoldPlas® Rack Code
31-11-106	32d	Rimmed Plate	6	GP-PR81
31-11-105	29d	Rimmed Plate	6	GP-PR81
31-11-104	26d	Rimmed Plate	6	GP-PR81
31-11-103	24d	Rimmed Plate	6	GP-PR81
31-11-102	22d	Rimmed Plate	6	GP-PR81
31-11-101	17d	Rimmed Plate	12	GP-PR81



Rimmed Oval Plate

Code	Dimensions in cm	Description	Pack	GoldPlas® Rack Code
31-12-107	38.2 x 27.9	Rimmed Oval Plate	6	GP-PR81
31-12-106	33.1 x 24.5	Rimmed Oval Plate	6	GP-PR81
31-12-105	24 x 17.7	Rimmed Oval Plate	6	GP-PR81
31-12-104	18.1 x 13.2	Rimmed Oval Plate	12	GP-PR81



Stacking Plate

Code	Dimensions in cm	Description	Pack	GoldPlas® Rack Code
31-12-112	25d	Stacking Plate	6	GP-PR81



Rectangular Plate

Code	Dimensions in cm	Description	Pack	GoldPlas® Rack Code
31-51-233	27 x 20	Rectangular Plate	6	GP-PR81
31-51-227	20 x 15	Rectangular Plate	12	GP-PR81
31-51-230	18 x 9	Rectangular Plate	12	GP-PR81



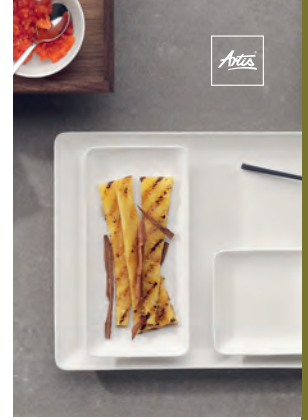
31-51-226
31-51-232



31-51-231

Square Plate

Code	Dimensions in cm	Description	Pack	GoldPlas® Rack Code
31-51-226	27d	Square Plate	6	GP-PR81
31-51-232	20d	Square Plate	12	GP-PR81
31-51-231	9d	Square Plate	12	GP-PR81





Coupe Bowl

Code	Dimensions in cm	Capacity	Description	Pack	GoldPlas® Rack Code
31-12-111	5.1 x 29d	1.7L 59¼oz	Coupe Bowl	6	GP-PR81
31-11-124	4.1 x 24d	1L 35¼oz	Coupe Bowl	6	GP-PR81
31-11-126	3.7 x 20d	62cl 21¼oz	Coupe Bowl	12	GP-PR81



Rimmed Bowl

Code	Dimensions in cm	Capacity	Description	Pack	GoldPlas® Rack Code
31-12-103	29d	50cl 17½oz	Rimmed Bowl	6	GP-PR81
31-12-102	24d	32cl 11¼oz	Rimmed Bowl	6	GP-PR81
31-12-101	20d	20cl 7oz	Rimmed Bowl	12	GP-PR81

Oval Bowl



Code	Dimensions in cm	Capacity	Description	Pack	GoldPlas® Rack Code
31-13-108	16d	50cl 17½oz	Oval Bowl	6	GP-PR81
31-13-107	12d	18cl 6¼oz	Oval Bowl	12	GP-PR81



Low Sided Bowl

Bowl

Bowl

Code	Dimensions in cm	Capacity	Description	Pack	GoldPlas® Rack Code
31-13-106	22d	1.7L 59¼oz	Low Sided Bowl	6	GP-PR81
31-13-105	19d	1.1L 38¾oz	Low Sided Bowl	6	GP-PR81
31-13-104	16d	75cl 26½oz	Low Sided Bowl	6	GP-PR81
31-13-102	8d	10cl 3½oz	Low Sided Bowl	12	GP-PR81
31-13-112	6 x 12.3d	45cl 15¾oz	Bowl	12	GP-PR81
31-19-112	8.6d	-	Cover Fits Bowl 31-13-110	12	GP-PR81
31-13-110	5.3 x 8.4d	19cl 6¾oz	Bowl	12	GP-PR81
31-13-109	5.6 x 6.3d	9cl 3¼oz	Bowl	12	GP-PR81



Arta



31-11-125



31-11-130



31-11-133

Deep Bowl/Dip Bowl

Code	Dimensions in cm	Capacity	Description	Pack	GoldPlas® Rack Code
31-11-125	6.9 x 20d	1.1L 38%oz	Deep Bowl	6	GP-PR81
31-11-130	6.1 x 13d	44cl 15%oz	Deep Bowl	6	GP-PR81
31-11-133	2.8 x 7d	4.5cl 1%oz	Dip Bowl	12	GP-PR81



Asymmetric Dish

Code	Dimensions in cm	Capacity	Description	Pack	GoldPlas® Rack Code
31-51-229	10 x 25d	90cl 31%oz	Asymmetric Dish	6	GP-PR81
31-51-228	8 x 17d	35cl 12%oz	Asymmetric Dish	6	GP-PR81



Asymmetric Plate

Code	Dimensions in cm	Capacity	Description	Pack	GoldPlas® Rack Code
31-12-108	29d	-	Asymmetric Plate	6	GP-PR81

Asymmetric Bowl

Code	Dimensions in cm	Capacity	Description	Pack	GoldPlas® Rack Code
31-12-109	29d	135cl 47%oz	Asymmetric Bowl	6	GP-PR81



31-16-102
31-16-101



31-12-105
31-12-104

Sauce Boat

Code	Dimensions in cm	Capacity	Description	Pack	GoldPlas® Rack Code
31-16-102	19.7 x 10.2d	35cl 12¼oz	Sauce Boat Fits 31-12-105 Plate	6	GP-PR81
31-16-101	13.9 x 7.4d	10cl 3½oz	Sauce Boat Fits 31-12-104 Plate	6	GP-PR81
31-12-105	24 x 17.7	-	Rimmed Oval Plate	6	GP-PR81
31-12-104	18.1 x 13.2	-	Rimmed Oval Plate	12	GP-PR81



31-13-101



31-14-114



31-14-115

Soup Cup

Code	Dimensions in cm	Capacity	Description	Pack	GoldPlas® Rack Code
31-13-101	5.6 x 10.2d	27cl 9½oz	Soup Cup Fits 31-14-115 and 31-14-114 Saucer	12	GP-PR81
31-14-114	16d	-	Saucer	12	GP-PR81
31-14-115	16.5d	-	Saucer 2 Wells	12	GP-PR81



Egg Cup

Code	Dimensions in cm	Capacity	Description	Pack	GoldPlas® Rack Code
31-19-101	12.9d	-	Egg Cup	12	GP-PR81



Salt and Pepper

Code	Dimensions in cm	Capacity	Description	Pack	GoldPlas® Rack Code
31-18-101	5.1 x 3.8d	-	Salt Shaker	12	GP-PR81
31-18-102	5.1 x 3.8d	-	Pepper Shaker	12	GP-PR81



31-14-106



31-19-108



31-87-101

Teapot

Code	Dimensions in cm	Capacity	Description	Pack	GoldPlas® Rack Code
31-19-106	10.9 x 19.3d	40cl 14oz	Teapot	6	GP-PR81
31-19-108	4.4 x 7.5d	-	Teapot Cover	12	GP-PR81
31-87-101	5 x 5.5d	-	Tea Strainer Fits Teapot 31-19-106	12	-



31-14-103



31-19-105

Coffee Pot

Code	Dimensions in cm	Capacity	Description	Pack	GoldPlas® Rack Code
31-19-103	12.3 x 15.2d	30cl 10½oz	Coffee Pot	6	GP-PR81
31-19-105	3.7 x 4.8d	-	Coffee Cover	12	GP-PR81



31-14-101


 31-14-103
31-14-102

Jug

Code	Dimensions in cm	Capacity	Description	Pack	GoldPlas® Rack Code
31-14-101	2.4 x 1.5d	4cl 1½oz	Jug	12	GP-PR81
31-14-103	11.8 x 15.1d	30cl 10½oz	Jug	6	GP-PR81
31-14-102	5.7 x 6d	15cl 5¼oz	Jug	12	GP-PR81


 31-14-111
31-14-108
31-14-106


31-14-105



31-14-116



31-14-109



31-14-112


 31-14-114
31-14-113


31-14-115

Cups and Saucers

Code	Dimensions in cm	Capacity	Description	Pack	GoldPlas® Rack Code
31-14-111	10.8 x 6.7d	35cl 12¼oz	Cup Fits Saucer 31-14-115	12	9E1
31-14-108	6.2 x 8.7d	22cl 7¾oz	Cup Fits Saucer 31-14-114	12	16E1
31-14-106	5.6 x 6.3d	9cl 3¼oz	Cup Fits Saucer 31-14-113	12	25E1
31-14-105	6.7 x 7.5d	22cl 7¾oz	Cup Stackable Fits Saucer 31-14-114	6	GP-CR20
31-14-116	5.5 x 5.8d	9cl 3¼oz	Cup Stackable Fits Saucer 31-14-113	6	GP-PR81
31-14-109	4.9 x 10.8d	24cl 8½oz	Tea Cup Fits Saucer 31-14-115	12	GP-CR16
31-14-112	9.3 x 9d	35cl 12¼oz	Mug Fits Saucer 31-14-115	6	16E1
31-14-114	16d	-	Saucer	12	GP-PR81
31-14-113	13.5d	-	Saucer	12	GP-PR81
31-14-115	16.5d	-	Saucer 2 Wells	12	GP-PR81



Bespoke Branding and Decoration

Bespoke branding and decoration gives you the opportunity to create a professional and personalised look for your business. We specialise in providing individual made to order items in your own design or one created especially

for you by our team of design experts. From a simple one colour logo to a full colour design we will work with you to create your own personalised tableware on our Purity and Bauscher products.



Contact us for further details at:
sales@artis-uk.com
 020 8391 5544

Minimum order quantity – Low minimum order quantities of only 300 Purity/Bauscher pieces whether it is a logo or an all over decoration allows small businesses such as independent cafés through to large restaurants and hotels chains to enhance their brand. Re order quantity 96 pieces.

Lead Time – Approximately 6 - 8 weeks from both approval of fired sample and receipt of the order. Please ask for current lead times at the start of the process. Our team of experts will support you through all stages of the journey to achieve your personalised tableware.

Inglaze decoration – The inglaze colour pigments are fired to high temperatures of 1,200c which sink into the glaze becoming one surface which is exceptionally hardwearing and scratch resistant. The colours will remain permanently bright and will not fade over time even after extensive use in a commercial dishwasher.

Please note this service is not available on Playground products.



Bauscher – Creative Solutions



**SHAPED BY
RESPONSIBILITY**
ISO 14001 + ISO 50001
CERTIFIED



Quality Assured



Quality Assured



EDGE CHIP
RESISTANCE



GLAZE
DAMAGE
RESISTANCE



STACKABILITY



DISHWASHER
SAFE



MICROWAVE
SAFE



FREEZER
SAFE



OVEN
SAFE



HEAT / CHILL
RETENTION



THERMAL
SHOCK
RESISTANCE

A high-performance professional tableware collection offering creative solutions with an everlasting appeal. Products which are strong and functional, yet aesthetically appealing make them a very popular long-term choice for all types of hospitality service.

*See following page for full contact details

Professional Vitrified Porcelain

Ultra Smooth High Fired Glaze

The exceptionally high firing temperature of over 1,400c delivers an exceptionally hard, strong and ultra smooth glaze which, is resistant to abrasion. This results in a surface which is easy to clean and does not suffer from permanent marking, therefore, showing your food off to perfection. The extended life delivers excellent cost in use.

Super Vitrified Porcelain

Bauscher is fired in the kiln to over 1,400c making it extremely dense, very strong and resistant to the ingress of water and thus a very hygienic surface on which to serve food. The firing temperature and profile delivers a fully vitrified porcelain which complies with the performance requirements of BS4034 Vitrified Hotelware.

Quality Raw Materials

The product uses the best raw materials and a sophisticated composition including kaolin, quartz and feldspar. This creates a highly appealing durable porcelain with an exceptionally strong and smooth glaze and bright white finish providing a cost effective long term solution.

Designed for Performance

Bauscher has been design engineered with performance and functionality in mind to withstand the rigours of a busy commercial environment. Rounded, strong edge profiles prevent chipping and the stackability of key shapes, aids space saving and back of house storage resulting in less breakages.

Optimum Heat Retention

The dense nature of the Bauscher body which is created through the firing process and vitrification means the product will hold on to heat for longer periods of time, therefore, keeping food and drink at an optimum temperature during food service.

Dishwasher, Oven, Microwave and Freezer Safe

Bauscher has been designed and developed to be highly resistant to the detergents and chemicals used in industrial dishwashers. The very high temperature firing makes all of our products oven safe to the maximum temperature of a commercial oven, however, to prolong the life of your product we do not recommend a very extreme/abrupt temperature change of greater than +/- 220K.

Shaped by Responsibility

Quality assurance is a major factor in the production of Bauscher products and this is reflected through the commitment to increase the yields of finished products and thus reduce the raw material consumption. Autonomous, highly efficient energy production generates electricity and heat. Enhanced environmental performance is achieved for our customers through our environmental programmes and we are certified to International Environmental Management Systems ISO 14001 and Energy Management ISO 50001.

5 Year Edge Chip Warranty and 3 Year Limited Glaze Abrasion Warranty

The performance of the product and glaze is outstanding and has been designed to withstand the demands of busy commercial kitchens and restaurants.

***For full details please use the following email: chip.glazewarranty@artis-uk.com to request a warranty registration form and a copy of the warranty conditions.**

Not applicable to Playground products, or for Hire Companies.





NEW



Scope – Linea

The power of simplicity, Scope Linea is a combination of simple, casual shapes and a subtle linear textured embossment in a pure white glaze.

Designed to be mixed with Scope Sea Glow to create visual impact on the tabletop appealing to a wide range of gastro styles.

**BAUSCHER**
GERMANY

Coupe Plate

Code	Dimensions in cm	Description	Pack	GoldPlas® Rack Code
31-12-128	32d	Coupe Plate	6	GP-PR81
31-12-129	28d	Coupe Plate	6	GP-PR81
31-12-130	20d	Coupe Plate	12	GP-PR81
31-12-131	15d	Coupe Plate	12	GP-PR81

Oval Platter

Code	Dimensions in cm	Description	Pack	GoldPlas® Rack Code
31-12-134	32 x 19	Oval Platter	6	GP-PR81

NEW



Coupe Bowl

Code	Dimensions in cm	Capacity	Description	Pack	GoldPlas® Rack Code
31-12-132	5.3 x 29d	1.9L 66%oz	Coupe Bowl	12	GP-PR81
31-12-133	4.4 x 24d	1.1L 38%oz	Coupe Bowl	6	GP-PR81



Bowl

Code	Dimensions in cm	Capacity	Description	Pack	GoldPlas® Rack Code
31-13-132	6.2 x 13.4d	45cl 15%oz	Bowl	6	9E1



31-14-152



31-14-153



31-14-154



31-14-155



31-14-157



31-14-156

Cups, Mugs and Saucers

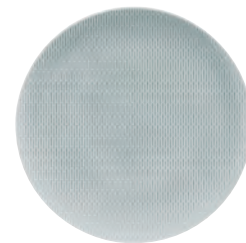
Code	Dimensions in cm	Capacity	Description	Pack	GoldPlas® Rack Code
31-14-152	4.5 x 7d	9cl 3¼oz	Cup Fits Saucer 31-14-157	12	36E1
31-14-153	5.3 x 9.9d	22cl 7¾oz	Cup Fits Saucer 31-14-156	12	16E1
31-14-154	6.1 x 11.6d	35cl 12¼oz	Cup Fits Saucer 31-14-156	12	9E1
31-14-155	8.9 x 8.7d	32cl 11¼oz	Mug Fits Saucer 31-14-156	6	25E1
31-14-157	12d	-	Saucer	12	9E1
31-14-156	16d	-	Combi Saucer	12	GP-PR81



Scope – Glow Sea

Scope is an exciting collection of subtly embossed and glazed items in a contemporary, fresh colour way, Glow Sea.

Informal shapes and a linear texture are cleverly combined to offer the perfect presentation for rustic and casual dining.



Coupe Plate

Code	Dimensions in cm	Description	Pack	GoldPlas® Rack Code
31-12-115	32d	Coupe Plate	6	GP-PR81
31-12-116	28d	Coupe Plate	6	GP-PR81
31-12-117	20d	Coupe Plate	12	GP-PR81
31-12-118	15d	Coupe Plate	12	GP-PR81



Oval Platter

Code	Dimensions in cm	Description	Pack	GoldPlas® Rack Code
31-12-119	32 x 19	Oval Platter	6	GP-PR81



Coupe Bowl

Code	Dimensions in cm	Capacity	Description	Pack	GoldPlas® Rack Code
31-12-120	5.3 x 29d	1.9L 66%oz	Coupe Bowl	12	GP-PR81
31-12-121	4.4 x 24d	1.1L 38%oz	Coupe Bowl	6	GP-PR81

Bowl



Code	Dimensions in cm	Capacity	Description	Pack	GoldPlas® Rack Code
31-13-123	6.2 x 13.4d	45cl 15%oz	Bowl	6	GP-PR81



31-14-123



31-14-125



31-14-126



31-14-127



31-14-124



31-14-128

Cups, Mugs and Saucers

Code	Dimensions in cm	Capacity	Description	Pack	GoldPlas® Rack Code
31-14-123	4.5 x 7d	9cl 3¼oz	Cup Fits Saucer 31-14-124	12	36E1
31-14-125	5.3 x 9.9d	22cl 7%oz	Cup Fits Saucer 31-14-128	12	16E1
31-14-126	6.1 x 11.6d	35cl 12¼oz	Cup Fits Saucer 31-14-128	12	9E1
31-14-127	8.9 x 8.7d	32cl 11¼oz	Mug Fits Saucer 31-14-128	6	25E1
31-14-124	12d	-	Saucer	12	GP-PR81
31-14-128	16d	-	Combi Saucer	12	GP-PR81

NEW



Country House – Glow Sea

Introducing Country House, a new hand-crafted look, with a fresh from the potters wheel style.

A series of concentric embossed lines on small bowls and chip mugs finished in the Glow Sea glaze makes this a hugely versatile range for all types of side orders and desserts.



31-14-151



31-14-150



31-13-131



31-13-130

Chip Mugs

Code	Dimensions in cm	Capacity	Description	Pack	GoldPlas® Rack Code
31-14-151	9.6 x 9h	34cl 12oz	Chip Mug	6	GP-PR81
31-14-150	10.1 x 6.7h	28cl 9½oz	Chip Mug	6	GP-PR81

Bowls

Code	Dimensions in cm	Capacity	Description	Pack	GoldPlas® Rack Code
31-13-131	6 x 15.8d	60cl 21oz	Bowl	6	GP-PR81
31-13-130	6 x 13d	39cl 13¾oz	Bowl	6	GP-PR81



Modern Rustic

Introducing a hand painted rustic style decoration in a collection of stunning colours and shapes designed to inspire. Each piece feels unique with a combination of spin effects and speckled finishes. In-glaze decoration ensures high performance and exceptional durability.



31-51-756



31-52-757



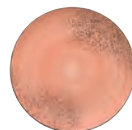
31-53-756



31-54-709
31-54-716
31-54-717



31-54-719
31-54-718



31-51-736



31-52-737



31-53-736



31-54-726
31-54-727
31-54-728



31-54-729
31-54-746

Lagoon

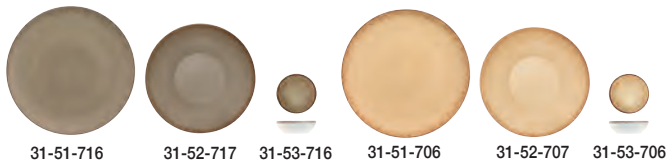
Code	Dimensions in cm	Capacity	Description	Pack	GoldPlas® Rack Code
31-51-756	28d	-	Coupe Plate	6	GP-PR81
31-52-757	24d	-	Deep Coupe Plate	6	GP-PR81
31-53-756	8d	7cl 2½oz	Dip Dish	12	GP-PR81
31-54-709	6.7 x 10.7d	35cl 12¼oz	Cup Fits Saucer 31-54-718	12	16E1
31-54-716	5.8 x 10d	25cl 8¾oz	Cup Fits Saucer 31-54-718	12	16E1
31-54-717	4.3 x 7.1d	9cl 3¼oz	Cup Fits Saucer 31-54-719	12	36E1
31-54-718	16d	-	Combi Saucer	12	GP-PR81
31-54-719	11d	-	Espresso Saucer	12	9E1

Lobster

Code	Dimensions in cm	Capacity	Description	Pack	GoldPlas® Rack Code
31-51-736	28d	-	Coupe Plate	6	GP-PR81
31-52-737	24d	-	Deep Coupe Plate	6	GP-PR81
31-53-736	8d	7cl 2½oz	Dip Dish	12	GP-PR81
31-54-726	6.7 x 10.7d	35cl 12¼oz	Cup Fits Saucer 31-54-729	12	16E1
31-54-727	5.8 x 10d	25cl 8¾oz	Cup Fits Saucer 31-54-729	12	16E1
31-54-728	4.3 x 7.1d	9cl 3¼oz	Cup Fits Saucer 31-54-746	12	36E1
31-54-729	16d	-	Combi Saucer	12	GP-PR81
31-54-746	11d	-	Espresso Saucer	12	9E1



Glassware: Gallery
 Cutlery: Style Ice
 Stackable Wooden Box
 Chicago Crushgrind®
 Atelier Carafe



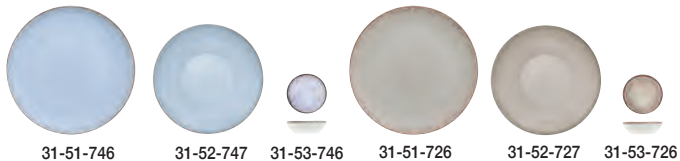
31-51-716 31-52-717 31-53-716 31-51-706 31-52-707 31-53-706

Natural Wood

Code	Dimensions in cm	Capacity	Description	Pack	GoldPlas® Rack Code
31-51-716	28d	-	Coupe Plate	6	GP-PR81
31-52-717	24d	-	Deep Coupe Plate	6	GP-PR81
31-53-716	8d	7cl 2½oz	Dip Dish	12	GP-PR81

Natural Sand

31-51-706	28d	-	Coupe Plate	6	GP-PR81
31-52-707	24d	-	Deep Coupe Plate	6	GP-PR81
31-53-706	8d	7cl 2½oz	Dip Dish	12	GP-PR81



31-51-746 31-52-747 31-53-746 31-51-726 31-52-727 31-53-726

Natural Blue

Code	Dimensions in cm	Capacity	Description	Pack	GoldPlas® Rack Code
31-51-746	28d	-	Coupe Plate	6	GP-PR81
31-52-747	24d	-	Deep Coupe Plate	6	GP-PR81
31-53-746	8d	7cl 2½oz	Dip Dish	12	GP-PR81

Natural Grey

31-51-726	28d	-	Coupe Plate	6	GP-PR81
31-52-727	24d	-	Deep Coupe Plate	6	GP-PR81
31-53-726	8d	7cl 2½oz	Dip Dish	12	GP-PR81



31-51-734
31-51-733
31-51-732



31-52-732
31-52-731
31-52-730



31-53-730



31-50-731
31-50-730



31-53-734
31-53-733



31-54-735
31-54-706
31-54-707



31-54-708
31-54-730

Ceramica Grey

Code	Dimensions in cm	Capacity	Description	Pack	GoldPlas® Rack Code
31-51-734	32d	-	Coupe Plate	6	GP-PR81
31-51-733	28d	-	Coupe Plate	6	GP-PR81
31-51-732	26d	-	Coupe Plate	6	GP-PR81
31-51-731	20d	-	Coupe Plate	12	GP-PR81
31-51-730	15d	-	Coupe Plate	12	GP-PR81
31-52-732	30d	-	Deep Coupe Plate	6	GP-PR81
31-52-731	24d	-	Deep Coupe Plate	6	GP-PR81
31-52-730	13d	-	Deep Coupe Plate	6	GP-PR81
31-53-730	8d	7cl 2½oz	Dip Dish	12	GP-PR81
31-50-731	21d	-	Square Plate	6	GP-PR81
31-50-730	15d	-	Square Plate	12	GP-PR81
31-53-734	15d	65cl 23oz	Bowl	6	GP-PR81
31-53-733	12d	35cl 12¼oz	Bowl	12	GP-PR81
31-54-735	7.3 x 11.8d	45cl 15¼oz	Cup Fits Saucer 31-54-708	6	9E1
31-54-706	6.7 x 10.7d	35cl 12¼oz	Cup Fits Saucer 31-54-708	12	16E1
31-54-707	5.8 x 10d	25cl 8¾oz	Cup Fits Saucer 31-54-708	12	16E1
31-54-708	16d	-	Combi Saucer	12	GP-PR81
31-54-730	12d	-	Espresso Saucer	12	9E1



31-51-724
31-51-723
31-51-722



31-51-721
31-51-720



31-53-720



31-51-744
31-51-743
31-51-742



31-52-742
31-52-741
31-52-740



31-53-740

Ceramica Wood

Code	Dimensions in cm	Capacity	Description	Pack	GoldPlas® Rack Code
31-51-724	32d	-	Coupe Plate	6	GP-PR81
31-51-723	28d	-	Coupe Plate	6	GP-PR81
31-51-722	26d	-	Coupe Plate	6	GP-PR81
31-51-721	20d	-	Coupe Plate	12	GP-PR81
31-51-720	15d	-	Coupe Plate	12	GP-PR81
31-52-722	30d	-	Deep Coupe Plate	6	GP-PR81
31-52-721	24d	-	Deep Coupe Plate	6	GP-PR81
31-52-720	13d	-	Deep Coupe Plate	6	GP-PR81
31-53-720	8d	7cl 2½oz	Dip Dish	12	GP-PR81

Ceramica Stone

Code	Dimensions in cm	Capacity	Description	Pack	GoldPlas® Rack Code
31-51-744	32d	-	Coupe Plate	6	GP-PR81
31-51-743	28d	-	Coupe Plate	6	GP-PR81
31-51-742	26d	-	Coupe Plate	6	GP-PR81
31-51-741	20d	-	Coupe Plate	12	GP-PR81
31-51-740	15d	-	Coupe Plate	12	GP-PR81
31-52-742	30d	-	Deep Coupe Plate	6	GP-PR81
31-52-741	24d	-	Deep Coupe Plate	6	GP-PR81
31-52-740	13d	-	Deep Coupe Plate	6	GP-PR81
31-53-740	8d	7cl 2½oz	Dip Dish	12	GP-PR81



Mozart

Introducing a classic, vintage feel with our Baroque inspired embossed range Mozart.

A delicate and ornate filigree design with stunning levels of detail are captured on classic shapes bringing a timeless and elegant appeal to the dining experience.



Rimmed Plate

Code	Dimensions in cm	Description	Pack	GoldPlas® Rack Code
31-11-107	30d	Rimmed Plate	6	GP-PR81
31-11-108	28d	Rimmed Plate	6	GP-PR81
31-11-109	25d	Rimmed Plate	6	GP-PR81
31-11-110	20d	Rimmed Plate	12	GP-PR81
31-11-111	16d	Rimmed Plate	12	GP-PR81



Oval Rimmed Plate

Code	Dimensions in cm	Description	Pack	GoldPlas® Rack Code
31-12-113	32 x 21	Oval Rimmed Plate	6	GP-PR81
31-12-114	28 x 19	Oval Rimmed Plate	6	GP-PR81



Rimmed Bowl

Code	Dimensions in cm	Capacity	Description	Pack	GoldPlas® Rack Code
31-11-112	23d	33cl 11½oz	Rimmed Bowl	6	GP-PR81



31-14-145



31-14-141



31-14-144

Bowls

Code	Dimensions in cm	Capacity	Description	Pack	GoldPlas® Rack Code
31-13-119	5.8 x 21d	95cl 33½oz	Serving Bowl	6	GP-PR81
31-13-120	4.2 x 16d	37cl 13oz	Bowl	12	GP-PR81
31-13-121	1.9 x 8d	4cl 1½oz	Dip Dish	24	GP-PR81



Sauce Boat

Code	Dimensions in cm	Capacity	Description	Pack	GoldPlas® Rack Code
31-16-103	6 x 13	10cl 3½oz	Sauce Boat	12	GP-PR81





Covered Sugar Bowl

Code	Dimensions in cm	Capacity	Description	Pack	GoldPlas® Rack Code
31-15-100	6.9 x 10.2d	25cl 8¾oz	Covered Sugar Bowl	12	GP-PR81



31-14-117



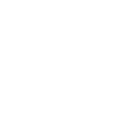
31-14-119



31-14-120



31-13-122



31-14-118



31-14-121

Teapot



Code	Dimensions in cm	Capacity	Description	Pack	GoldPlas® Rack Code
31-19-114	11.7 x 15.7d	35cl 12¼oz	Teapot	6	GP-PR81



Jug

Code	Dimensions in cm	Capacity	Description	Pack	GoldPlas® Rack Code
31-14-122	7.5 x 9.8d	10cl 3½oz	Jug	12	GP-PR81

Cups, Mugs and Saucers

Code	Dimensions in cm	Capacity	Description	Pack	GoldPlas® Rack Code
31-14-117	5.2 x 6.8d	10cl 3½oz	Cup Fits Saucer 31-14-118	12	36E1
31-14-119	7.6 x 8.5d	25cl 8¾	Cup Fits Saucer 31-14-121	12	25E1
31-14-120	5.3 x 8.2d	18cl 6¼oz	Stacking Cup Fits Saucer 31-14-121	12	25E1
31-13-122	5.2 x 10.2d	28cl 9¾oz	Stacking Soup Cup Fits Saucer 31-14-121	12	16E1
31-14-118	11d	-	Saucer	12	GP-PR81
31-14-121	16d	-	Combi Saucer	12	GP-PR81

Options



White

A complete collection of high-performance porcelain tableware offering creative solutions with an everlasting appeal.

Available in a wide range of innovative shapes, designed to be mix and matched to create the perfect professional long-term solution.

Options



Options Triangular Coupe Plate



Coupe Plate

Code	Dimensions in cm	Description	Pack	GoldPlas® Rack Code
31-51-129	32d	Options Coupe Plate	6	GP-PR81
31-51-128	30d	Options Coupe Plate	6	GP-PR81
31-51-207	28d	Options Coupe Plate	6	GP-PR81
31-51-206	26d	Options Coupe Plate	6	GP-PR81
31-51-205	20d	Options Coupe Plate	12	GP-PR81
31-51-204	17d	Options Coupe Plate	12	GP-PR81
31-51-203	15d	Options Coupe Plate	12	GP-PR81



Wide Rimmed Plate

Code	Dimensions in cm	Description	Pack	GoldPlas® Rack Code
31-51-120	32d	Enjoy Wide Rimmed Plate	6	GP-PR81
31-11-119	28d	Enjoy Wide Rimmed Plate	6	GP-PR81
31-11-127	26d	Enjoy Wide Rimmed Plate	6	GP-PR81
31-11-128	23d	Enjoy Wide Rimmed Plate	6	GP-PR81
31-51-121	16d	Enjoy Wide Rimmed Plate	12	GP-PR81



Relations Today
Oval Plate



Rimmed Plate

Code	Dimensions in cm	Capacity	Description	Pack	GoldPlas® Rack Code
31-11-113	31d	-	Relation Today Rimmed Plate	6	GP-PR81
31-11-114	28d	-	Relation Today Rimmed Plate	6	GP-PR81
31-11-115	25d	-	Relation Today Rimmed Plate	6	GP-PR81
31-11-116	20d	-	Relation Today Rimmed Plate	12	GP-PR81
31-11-117	16d	-	Relation Today Rimmed Plate	12	GP-PR81

Oval Plate

Code	Dimensions in cm	Capacity	Description	Pack	GoldPlas® Rack Code
31-12-123	33 x 24	-	Relation Today Oval Plate	6	GP-PR81
31-12-122	29 x 21	-	Relation Today Oval Plate	6	GP-PR81



Square Coupe Plate

Code	Dimensions in cm	Capacity	Description	Pack	GoldPlas® Rack Code
31-50-146	32d	-	Options Square Coupe Plate	6	GP-PR81
31-50-145	27d	-	Options Square Coupe Plate	6	GP-PR81
31-50-144	21d	-	Options Square Coupe Plate	12	GP-PR81
31-50-143	15d	-	Options Square Coupe Plate	12	GP-PR81



31-50-161
31-50-160
31-50-159

31-50-165

Square Plate

Code	Dimensions in cm	Capacity	Description	Pack	GoldPlas® Rack Code
31-50-161	21.5d	-	Modulus Square Plate	6	GP-PR81
31-50-160	15d	-	Modulus Square Plate	12	GP-PR81
31-50-159	9.5d	-	Modulus Square Plate	6	GP-PR81
31-50-165	18.5d	-	Modulus Square Plate	6	GP-PR81



Square Platter

Code	Dimensions in cm	Capacity	Description	Pack	GoldPlas® Rack Code
31-50-117	14 x 12	-	Emotion Square Platter	12	GP-PR81

Rectangular Coupe Plate

Code	Dimensions in cm	Capacity	Description	Pack	GoldPlas® Rack Code
31-50-151	41 x 21	-	Options Rectangular Coupe Plate	6	GP-PR81
31-50-150	36 x 23	-	Options Rectangular Coupe Plate	6	GP-PR81
31-50-149	32 x 23	-	Options Rectangular Coupe Plate	6	GP-PR81
31-50-148	28 x 18	-	Options Rectangular Coupe Plate	6	GP-PR81



Modulus Rectangular Plate

31-50-163

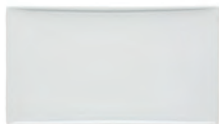
31-50-164

Rectangular Plate

Code	Dimensions in cm	Capacity	Description	Pack	GoldPlas® Rack Code
31-50-163	30 x 15	-	Modulus Rectangular Plate	6	GP-PR81
31-50-164	25.5 x 13	-	Modulus Rectangular Plate with recess	6	GP-PR81



Emotion
Rectangular
Platter



Rectangular Platter

Code	Dimensions in cm	Capacity	Description	Pack	GoldPlas® Rack Code
31-50-116	47 x 26	-	Emotion Rectangular Platter	3	GP-PR81
31-50-115	40 x 32	-	Emotion Rectangular Platter	2	GP-PR81
31-50-114	36 x 20	-	Emotion Rectangular Platter	6	GP-PR81
31-50-113	32 x 26	-	Emotion Rectangular Platter	4	GP-PR81
31-50-119	17 x 6	-	Emotion Rectangular Platter	12	GP-PR81

Triangular Coupe Plate

Code	Dimensions in cm	Capacity	Description	Pack	GoldPlas® Rack Code
31-50-140	32d	-	Options Triangular Coupe Plate	6	GP-PR81
31-50-138	20d	-	Options Triangular Coupe Plate	12	GP-PR81

Coupe Bowl

Code	Dimensions in cm	Capacity	Description	Pack	GoldPlas® Rack Code
31-52-115	30d	-	Options Coupe Bowl	6	GP-PR81
31-52-114	24d	-	Options Coupe Bowl	6	GP-PR81
31-52-113	18d	-	Options Coupe Bowl	12	GP-PR81

Shallow Coupe Bowl

Code	Dimensions in cm	Capacity	Description	Pack	GoldPlas® Rack Code
31-52-117	28d	-	Options Shallow Coupe Bowl	6	GP-PR81
31-52-116	24d	-	Options Shallow Coupe Bowl	6	GP-PR81



Rimmed Bowl

Code	Dimensions in cm	Capacity	Description	Pack	GoldPlas® Rack Code
28-52-158	24d	-	Relation Today Rimmed Bowl	6	GP-PR81
31-11-118	28d	-	Relation Today Rimmed Bowl	6	GP-PR81


 Options
Square
Coupe Bowl

 Options
Triangular
Coupe Bowl


Square Coupe Bowl

Code	Dimensions in cm	Capacity	Description	Pack	GoldPlas® Rack Code
31-10-109	5 x 30d	106cl 37¼oz	Options Square Coupe Bowl	6	GP-PR81

Triangular Coupe Bowl

Code	Dimensions in cm	Capacity	Description	Pack	GoldPlas® Rack Code
31-10-110	5 x 30d	113cl 39¾oz	Options Triangular Coupe Bowl	6	GP-PR81

Enjoy Bowl and
Asymmetric SaucerRelation Today
Bowl31-53-130
31-53-129

31-54-134

Bowl and Asymmetric Saucer

Code	Dimensions in cm	Capacity	Description	Pack	GoldPlas® Rack Code
31-53-130	7.8 x 12d	44cl 15½oz	Enjoy Bowl Fits Saucer 31-54-134	12	GP-PR81
31-53-129	7.3 x 10.6d	35cl 12¼oz	Enjoy Bowl Fits Saucer 31-54-134	6	GP-PR81
31-54-134	17.4 x 14.9d	-	Enjoy Asymmetric Saucer	12	GP-PR81

31-53-143
31-53-142

31-53-146



31-54-153

28-53-185
28-53-182
28-53-17931-13-124
31-13-125

Bowls

Code	Dimensions in cm	Capacity	Description	Pack	GoldPlas® Rack Code
31-53-143	16d	50cl 17½oz	Options Bowl	6	GP-PR81
31-53-142	14d	32cl 11¼oz	Options Bowl	12	GP-PR81
31-53-146	6.3 x 10.5d	26cl 9¼oz	Options Bowl	12	GP-PR81
31-54-153	4.5 x 8.7d	15cl 5¼oz	Options Bowl	12	16E1
28-53-185	18d	85cl 30oz	Relation Today Bowl	6	GP-PR81
28-53-182	15d	50cl 17½oz	Relation Today Bowl	6	GP-PR81
28-53-179	13d	31cl 11oz	Relation Today Bowl	6	GP-PR81
31-13-124	6.4 x 15d	65cl 23oz	Bistro Bowl	6	GP-PR81
31-13-125	5.5 x 12d	36cl 12¾oz	Bistro Bowl	12	9E1



Bloom Bowl

Code	Dimensions in cm	Capacity	Description	Pack	GoldPlas® Rack Code
31-53-138	14d	18cl 6¼oz	Options Bloom Bowl	12	GP-PR81



28-53-106
28-53-105



28-54-101

Soup Bowl and Saucer

Code	Dimensions in cm	Capacity	Description	Pack	GoldPlas® Rack Code
28-53-106	7 x 16d	35cl 12¼oz	Avantgarde Soup Bowl Fits Saucer 28-54-101	12	GP-PR81
28-53-105	6 x 14d	25cl 8¾oz	Avantgarde Soup Bowl	6	GP-PR81
28-54-101	17d	-	Avantgarde Soup Saucer	12	GP-PR81



31-53-141

31-54-158

Stacking Soup Bowl and Saucer

Code	Dimensions in cm	Capacity	Description	Pack	GoldPlas® Rack Code
31-53-141	5.6 x 9.8d	27cl 9½oz	Options Stacking Soup Bowl Fits Saucer 31-54-158	12	9E1
31-54-158	15d	-	Options Saucer	12	GP-PR81



Avantgarde
Soup Bowl
Soup Saucer



Emotion Taster Bowl



Emotion Taster Dish



Taster Bowl

Code	Dimensions in cm	Capacity	Description	Pack	GoldPlas® Rack Code
31-53-121	14 x 12	40cl 14oz	Emotion Taster Bowl	6	GP-PR81
31-53-122	7 x 6	3cl 1oz	Emotion Taster Bowl	12	GP-PR81



Taster Dish

Code	Dimensions in cm	Capacity	Description	Pack	GoldPlas® Rack Code
31-53-123	14 x 6	-	Emotion Taster Dish	12	GP-PR81

31-59-121

31-54-157

31-54-161

Egg Cup

Code	Dimensions in cm	Capacity	Description	Pack	GoldPlas® Rack Code
31-59-121	4 x 5,2d	-	Options Egg Cup Fits Saucer 31-54-157 and 31-54-161	12	36E1
31-54-157	12d	-	Options Coupe Saucer	12	GP-PR81
31-54-161	11d	-	Options Triangular Saucer	12	GP-PR81



31-53-152



31-53-151



31-53-153



31-53-148



31-53-147



31-53-162

Dip Dish

Code	Dimensions in cm	Capacity	Description	Pack	GoldPlas® Rack Code
31-53-152	10 x 6.5	8cl 2¾oz	Modulus Rectangular Dip Dish	12	GP-PR81
31-53-151	10 x 10	16cl 5¼oz	Modulus Square Dish	12	GP-PR81
31-53-153	20 x 10	38cl 13¼oz	Modulus Rectangular Dish	12	GP-PR81
31-53-148	8 x 2h	5cl 1¾oz	Modulus Dip Dish	12	GP-PR81
31-53-147	8 x 4h	11cl 3¾oz	Modulus Dip Dish	12	GP-PR81
31-53-162	8 x 2.5h	7cl 2½oz	Modulus Dip Dish	12	GP-PR81



Shallow Dish

Code	Dimensions in cm	Capacity	Description	Pack	GoldPlas® Rack Code
28-58-109	10 x 2d	10cl 3½oz	Coffeelings Shallow Dish	6	GP-PR81

Relation Today
Sauce Boat
Options Saucer



28-56-116

31-54-159

Sauce Boat and Saucer

Code	Dimensions in cm	Capacity	Description	Pack	GoldPlas® Rack Code
28-56-116	7.8 x 11.7d	30cl 10½oz	Relation Today Sauce Boat	6	GP-PR81
31-54-159	15d	-	Options Sauce Boat Saucer	12	GP-PR81



Porcelain Spoon

Code	Dimensions in cm	Capacity	Description	Pack	GoldPlas® Rack Code
31-56-102	13 x 4.5	-	Options Porcelain Spoon	12	GP-PR81



Salt and Pepper

Code	Dimensions in cm	Capacity	Description	Pack	GoldPlas® Rack Code
31-58-102	10.2 x 5d	-	Options Salt Shaker	12	GP-PR81
31-58-103	10.2 x 5d	-	Options Pepper Shaker	12	GP-PR81



Smart

The clean and simple white lines of the Smart collection provides an essential range for the presentation and serving of a variety of foods and beverage, offering a cost effective and practical solution for long term use.



Rimmed Plate

Code	Dimensions in cm	Description	Pack	GoldPlas® Rack Code
31-10-108	30d	Rimmed Plate	6	GP-PR81
31-10-107	27d	Rimmed Plate	6	GP-PR81
31-10-106	21d	Rimmed Plate	12	GP-PR81
31-10-105	17d	Rimmed Plate	12	GP-PR81



Oval Rimmed Plate

Code	Dimensions in cm	Description	Pack	GoldPlas® Rack Code
31-13-118	32d	Deep Rimmed Plate	6	GP-PR81



Rimmed Bowl

Code	Dimensions in cm	Description	Pack	GoldPlas® Rack Code
31-13-117	27d	Rimmed Bowl	6	GP-PR81
31-13-116	23d	Rimmed Bowl	6	GP-PR81



31-13-115



31-13-114



31-13-113

Bowl

Code	Dimensions in cm	Capacity	Description	Pack	GoldPlas® Rack Code
31-13-115	20d	124cl 43½oz	Bowl	6	GP-PR81
31-13-114	15d	65cl 23oz	Bowl	12	GP-PR81
31-13-113	12d	36cl 12¾oz	Bowl	12	GP-PR81



31-52-189



31-54-313
31-54-314
31-54-315



31-54-316



31-54-318
31-54-317

Cups, Mugs and Saucers

Code	Dimensions in cm	Capacity	Description	Pack	GoldPlas® Rack Code
31-52-189	5.5 x 6.5d	8cl 2¾oz	Espresso Cup Fits Saucer 31-54-317	12	25E1
31-54-313	5.5 x 9d	18cl 6¼oz	Cup Fits Saucer 31-54-318	12	16E1
31-54-314	5.8 x 10.2d	25cl 8¾oz	Cup Fits Saucer 31-54-318	12	16E1
31-54-315	6.6 x 11d	35cl 12¼oz	Cup Fits Saucer 31-54-318	12	9E1
31-54-316	9.9 x 8.3d	28cl 9¾oz	Mug Fits Saucer 31-54-318	6	GP-PR81
31-54-318	15d	-	Saucer	12	GP-PR81
31-54-317	12d	-	Saucer	12	GP-PR81





Salt, Nordic and Grey Glaze

Introducing two casual designs to the Smart Collection, Nordic is a textured full cover decoration in shades of grey and blue and Salt emulates a reactive style glaze texture in a soft grey.

Complimentary grey glazed items mix and match with both ranges.



Salt Coupe Plate

Code	Dimensions in cm	Capacity	Description	Pack	GoldPlas® Rack Code
31-52-786	28d	-	Salt Coupe Plate	6	GP-PR81
31-52-785	26d	-	Salt Coupe Plate	6	GP-PR81
31-52-784	20d	-	Salt Coupe Plate	12	GP-PR81
31-52-783	17d	-	Salt Coupe Plate	12	GP-PR81



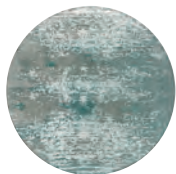
Salt Deep Coupe Plate

Code	Dimensions in cm	Capacity	Description	Pack	GoldPlas® Rack Code
31-52-788	28d	-	Salt Deep Coupe Plate	6	GP-PR81
31-52-787	24d	-	Salt Deep Coupe Plate	6	GP-PR81



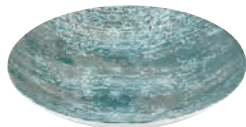
Salt Saucer

Code	Dimensions in cm	Capacity	Description	Pack	GoldPlas® Rack Code
31-54-788	15d	-	Salt Saucer	12	GP-PR81
31-54-787	12d	-	Salt Saucer	12	GP-PR81



Nordic Coupe Plate

Code	Dimensions in cm	Capacity	Description	Pack	GoldPlas® Rack Code
31-52-792	28d	-	Nordic Coupe Plate	6	GP-PR81
31-52-791	26d	-	Nordic Coupe Plate	6	GP-PR81
31-52-790	20d	-	Nordic Coupe Plate	12	GP-PR81
31-52-789	17d	-	Nordic Coupe Plate	12	GP-PR81



Nordic Deep Coupe Plate

Code	Dimensions in cm	Capacity	Description	Pack	GoldPlas® Rack Code
31-52-793	24d	-	Nordic Deep Coupe Plate	6	GP-PR81
31-52-794	28d	-	Nordic Deep Coupe Plate	6	GP-PR81



Nordic Saucer

Code	Dimensions in cm	Capacity	Description	Pack	GoldPlas® Rack Code
31-54-797	15d	-	Nordic Saucer	12	GP-PR81
31-54-796	12d	-	Nordic Saucer	12	GP-PR81



Grey Glaze Bowl

Code	Dimensions in cm	Capacity	Description	Pack	GoldPlas® Rack Code
31-53-782	15d	65cl 23oz	Bowl	12	GP-PR81
31-53-781	12d	36cl 12¾oz	Bowl	12	GP-PR81
31-53-780	8d	7cl 2½oz	Bowl	24	GP-PR81



31-54-780
31-54-781
31-54-785



31-54-786

Grey Glaze Cups and Mugs

Code	Dimensions in cm	Capacity	Description	Pack	GoldPlas® Rack Code
31-54-780	5.5 x 6.5d	8cl 2¾oz	Espresso Cup Fits Saucer 31-54-796 and 31-54-787	12	GP-PR81
31-54-781	5.8 x 10.2d	25cl 8¾oz	Cup Fits Saucer 31-54-797 and 31-54-787	12	GP-PR81
31-54-785	6.6 x 11d	35cl 12¼oz	Cup Fits Saucer 31-54-797 and 31-54-787	12	GP-PR81
31-54-786	9.9 x 8.3d	28cl 9¾oz	Mug Fits Saucer 31-54-797 and 31-54-787	6	GP-PR81



Playground – Beyond Taste



Bring an air of playfulness and fun back to the dining experience. Playground is a collection of contemporary stoneware in a range of innovative shapes combining striking glaze finishes with texture and colour to appeal to the latest gastronomic trends in food presentation.

PLAYGROUND

Contemporary Stoneware

Playground is a collection of rustic stoneware products of the highest quality offering elegant tableware concepts that meet the requirements of today's customers.

The collection takes on board the mix and match principle so popular in the modern dining experience and has designed products to mix with our porcelain brands to create striking combinations.

Tapping in to the multi sensory experience through the use of bold shapes combined with multiple textures, striking glazes and depths of colour to create a mood and an emotional response to dining.

Our collection ReNew is an innovative product made from 90% recycled ceramic material to deliver the latest in eco-responsible ranges.

All of our Stoneware products are dishwasher safe, heat resistant and suitable for a microwave.

The full collection of Playground combines multiple material combinations such as glass, wood, stainless steel, stone and marble and can be viewed on our Artis website or by contacting us for further details at: sales@artis-uk.com
Tel: 020 8391 5544





NEW

Coast & Country

A stoneware collection in a stunning matt black glaze with a 'cast iron' look and a 'griddle effect' embossment across the centre of the items.

Each flatware piece is slightly different offering endless combinations for presentation and bowls with an interlocking feature for stability and ease of service.



PLAYGROUND



Flat Round Plate

Code	Dimensions in cm	Capacity	Description	Pack	GoldPlas® Rack Code
68-21-720	28d	-	Flat Round Plate	6	GP-PR81



Oval Platter

Code	Dimensions in cm	Capacity	Description	Pack	GoldPlas® Rack Code
68-28-709	36 x 18	-	Oval Platter	2	GP-PR81



Flat Round Plate One Ridge

Code	Dimensions in cm	Capacity	Description	Pack	GoldPlas® Rack Code
68-21-762	28	-	Flat Round Plate One Ridge	6	GP-PR81



NEW



Round Dip Dish



Code	Dimensions in cm	Capacity	Description	Pack	GoldPlas® Rack Code
68-23-779	8 x 4.2h	8cl 2¾oz	Round Dip Dish	12	GP-PR81



Round Bowl

Code	Dimensions in cm	Capacity	Description	Pack	GoldPlas® Rack Code
68-23-784	15 x 8.2h	70cl 24½oz	Round Bowl	6	GP-PR81
68-23-782	12 x 5.6h	30cl 10½oz	Round Bowl	6	GP-PR81
68-23-780	9 x 4.8h	13cl 4½oz	Round Bowl	6	GP-PR81



Oval Platter One Ridge

Code	Dimensions in cm	Capacity	Description	Pack	GoldPlas® Rack Code
68-22-719	29 x 15	-	Oval Platter One Ridge	6	GP-PR81



Lid / Plate

Code	Dimensions in cm	Capacity	Description	Pack	GoldPlas® Rack Code
68-23-783	12 x 3h	-	Lid Plate Fits Bowl 68-23-782	6	GP-PR81
68-23-781	9 x 3h	-	Lid Plate Fits Bowl 68-23-780	6	GP-PR81



NEW



Elements - Sand

The clean and simple lines of Elements embodies the trend for natural looking products that showcase fresh, colourful and plant based cuisine. Sand is a soft and natural semi matt glaze providing an understated canvas for fresh food.

PLAYGROUND



Flat Round Plate

Code	Dimensions in cm	Capacity	Description	Pack	GoldPlas® Rack Code
68-21-763	28d	-	Flat Round Plate	6	GP-PR81
68-21-764	22d	-	Flat Round Plate	6	GP-PR81



Bowls

Code	Dimensions in cm	Capacity	Description	Pack	GoldPlas® Rack Code
68-23-785	22 x 3.8h	1.25L 42½oz	Bowl Round	6	GP-PR81
68-23-786	16 x 3.8h	60cl 21oz	Bowl Round	6	GP-PR81
68-23-787	12 x 3.9h	33cl 11½oz	Bowl Round	6	GP-PR81



Mug

Code	Dimensions in cm	Capacity	Description	Pack	GoldPlas® Rack Code
68-24-734	7.2 x 10.5h	38cl 13¼oz	Mug no Handle	6	GP-PR81



NEW



NEW

68-24-736

68-24-737

Cup and Saucer

Code	Dimensions in cm	Capacity	Description	Pack	GoldPlas® Rack Code
68-24-736	5.6 x 6.4h	11cl 3¾oz	Cup	6	49E1
68-24-737	11.7d	-	Saucer	6	9E1

Flat Round Plate



Code	Dimensions in cm	Capacity	Description	Pack	GoldPlas® Rack Code
68-21-765	28d	-	Flat Round Plate	6	GP-PR81
68-21-766	22d	-	Flat Round Plate	6	GP-PR81

Bowls



Code	Dimensions in cm	Capacity	Description	Pack	GoldPlas® Rack Code
68-23-788	22 x 3.8h	1.25L 42¼oz	Bowl Round	6	GP-PR81
68-23-789	16 x 3.8h	60cl 21oz	Bowl Round	6	GP-PR81
68-23-790	12 x 3.9h	33cl 11½oz	Bowl Round	6	GP-PR81

Mug



Code	Dimensions in cm	Capacity	Description	Pack	GoldPlas® Rack Code
68-24-735	7.2 x 10.5h	38cl 13¼oz	Mug no Handle	6	GP-PR81



NEW

68-24-738



NEW

68-24-739

Cup and Saucer

Code	Dimensions in cm	Capacity	Description	Pack	GoldPlas® Rack Code
68-24-738	5.6 x 6.4h	11cl 3¾oz	Cup	6	49E1
68-24-739	11.7d	-	Saucer	6	9E1

Elements - Black

Simple cylindrical shapes and soft curved bases give Elements its wide appeal as a key player for food presentation. A stunning black semi matt finish allows the food to stand out against the sophisticated simplicity of the shapes.





Ceramic
Material

ReNew - White

An innovative stoneware collection made with 90% recycled ceramic material delivering the latest in sustainability.

A smooth matt brown finish on the exterior showcasing the pure colour of the clay contrasted by a durable white glaze on the interior offering an artisan look with a practical solution.



PLAYGROUND



Flat Round Plate

Code	Dimensions in cm	Capacity	Description	Pack	GoldPlas® Rack Code
68-21-100	28d	-	Flat Round Plate	6	GP-PR81
68-21-101	22d	-	Flat Round Plate	6	GP-PR81



Oval Platter

Code	Dimensions in cm	Capacity	Description	Pack	GoldPlas® Rack Code
68-22-100	30 x 18	-	Oval Platter	2	GP-PR81



Bowls

Code	Dimensions in cm	Capacity	Description	Pack	GoldPlas® Rack Code
68-23-100	17 x 6.5h	70cl 24%oz	Bowl Round	6	GP-PR81
68-23-101	14 x 5.8h	32cl 11%oz	Bowl Round	6	GP-PR81
68-23-102	9 x 3.9h	10cl 3%oz	Bowl Round	12	GP-PR81



Cup

Code	Dimensions in cm	Capacity	Description	Pack	GoldPlas® Rack Code
68-24-100	9 x 8.2h	31cl 11oz	Cup no Handle	6	GP-PR81



ReNew Relief - White



Bowls Relief

Code	Dimensions in cm	Capacity	Description	Pack	GoldPlas® Rack Code
68-23-103	17 x 6.5h	70cl 24%oz	Bowl Round	6	GP-PR81
68-23-104	14 x 5.8h	32cl 11%oz	Bowl Round	6	GP-PR81
68-23-105	9 x 3.9h	10cl 3%oz	Bowl Round	12	GP-PR81



Ceramic
Material

ReNew - Taupe

Taupe has a smooth matt brown finish on the exterior contrasting with the shiny brown durable glaze on the interior offering an artisan look combined with a practical serving solution.

The range is perfectly completed with an option of complimentary bowls with a relief texture. Both colourways work perfectly mixed together to create a stunning backdrop to the foods colours and textures.

NEW

PLAYGROUND





Flat Round Plate

Code	Dimensions in cm	Capacity	Description	Pack	GoldPlas® Rack Code
68-21-110	28d	-	Flat Round Plate	6	GP-PR81
68-21-111	22d	-	Flat Round Plate	6	GP-PR81



Oval Platter

Code	Dimensions in cm	Capacity	Description	Pack	GoldPlas® Rack Code
68-22-110	30 x 18	-	Oval Platter	2	GP-PR81



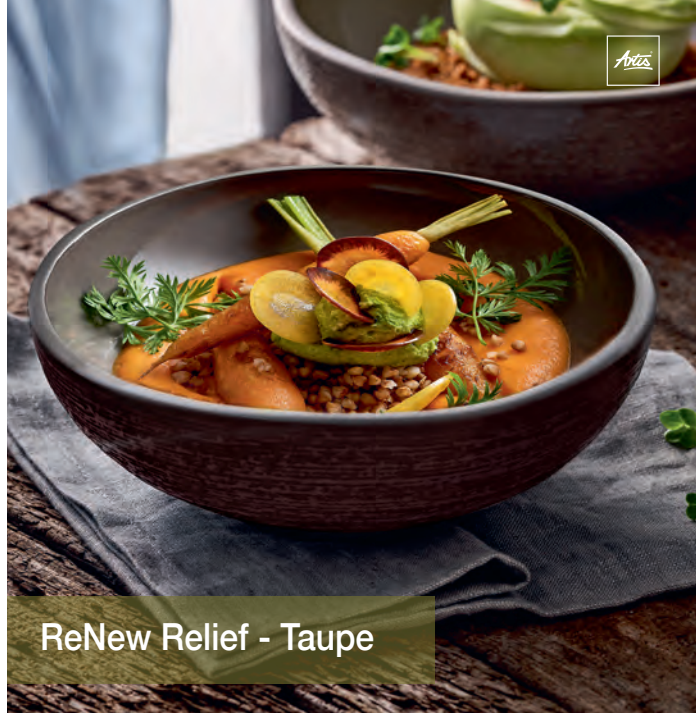
Bowls

Code	Dimensions in cm	Capacity	Description	Pack	GoldPlas® Rack Code
68-23-110	17 x 6.5h	70cl 24%oz	Bowl Round	6	GP-PR81
68-23-111	14 x 5.8h	32cl 11%oz	Bowl Round	6	GP-PR81
68-23-112	9 x 3.9h	10cl 3%oz	Bowl Round	12	GP-PR81



Cup

Code	Dimensions in cm	Capacity	Description	Pack	GoldPlas® Rack Code
68-24-100	9 x 8.2h	31cl 11oz	Cup no Handle	6	GP-PR81



ReNew Relief - Taupe



Bowls Relief

Code	Dimensions in cm	Capacity	Description	Pack	GoldPlas® Rack Code
68-23-113	17 x 6.5h	70cl 24%oz	Bowl Round	6	GP-PR81
68-23-114	14 x 5.8h	32cl 11%oz	Bowl Round	6	GP-PR81
68-23-115	9 x 3.9h	10cl 3%oz	Bowl Round	12	GP-PR81



NEW

PLAYGROUND

Silento

A pure, natural matt glaze with a slight texture contrasts perfectly with the handcrafted, smooth swirl of white glaze in the base.

The deep sides and the elegant foot makes this bowl ideal for fine dining combined with the neutral colour palette it frames the food creating a spectacular visual display.

Made of high quality stoneware it is a perfect mix with other stoneware and porcelain products in our collection.



68-23-122



68-23-121



68-23-120

Deep Coupe Bowl

Code	Dimensions in cm	Capacity	Description	Pack	GoldPlas® Rack Code
68-23-122	28d	170cl 59%oz	Deep Coupe Bowl	2	GP-PR81
68-23-121	26d	149cl 49%oz	Deep Coupe Bowl	2	GP-PR81
68-23-120	24d	115cl 40%oz	Deep Coupe Bowl	2	GP-PR81



Flat Round Plate

Code	Dimensions in cm	Capacity	Description	Pack	GoldPlas® Rack Code
68-21-705	27 x 2.5h	-	Flat Round Plate	6	GP-PR81
68-21-704	21 x 2.5h	-	Flat Round Plate	6	GP-PR81



Bowls Round

Code	Dimensions in cm	Capacity	Description	Pack	GoldPlas® Rack Code
68-23-716	21 x 7h	146cl 51¼oz	Bowl Round	6	GP-PR81
68-23-715	16 x 6.2h	71cl 25oz	Bowl Round	6	GP-PR81



68-23-718



68-23-717

Bowls Square

Code	Dimensions in cm	Capacity	Description	Pack	GoldPlas® Rack Code
68-23-718	9 x 9 x 4.3h	19cl 6¾oz	Bowl Deep Flat Square	6	GP-PR81
68-23-717	9 x 9 x 2.3h	8cl 2¾	Bowl Flat Square	6	GP-PR81

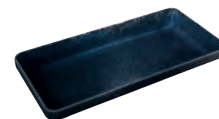
Nara Black

Simple, matt black stoneware with a shimmering speckled glaze finish in a striking collection of designer led shapes gives Nara its unique appeal.





68-23-720



68-23-719

Bowls Rectangular

Code	Dimensions in cm	Capacity	Description	Pack	GoldPlas® Rack Code
68-23-720	18 x 9 x 4.3h	42cl 14½oz	Bowl Deep Rectangular	6	GP-PR81
68-23-719	18 x 9 x 2.3h	18cl 6¼oz	Bowl Flat Rectangular	6	GP-PR81



68-24-725



68-24-701



68-24-726

Cup, Mug and Saucer

Code	Dimensions in cm	Capacity	Description	Pack	GoldPlas® Rack Code
68-24-725	7 x 6.6h	10cl 3½oz	Espresso Cup Fits Saucer 68-24-726	6	GP-CR20
68-24-701	8 x 9.5h	32cl 11¼oz	Mug no Handle Fits Saucer 68-24-726	6	GP-CR20
68-24-726	15 x 2.5h	-	Saucer	6	GP-PR81



Nara Black Relief

Smooth matt black stoneware with contrasting embossed linear textured decoration, creating a modern contemporary style and combining perfectly with the Nara black collection.



Flat Round Plate Relief

Code	Dimensions in cm	Capacity	Description	Pack	GoldPlas® Rack Code
68-21-707	27 x 2.5h	-	Flat Round Plate	6	GP-PR81
68-21-706	21 x 2.5h	-	Flat Round Plate	6	GP-PR81



Bowls Round Relief

Code	Dimensions in cm	Capacity	Description	Pack	GoldPlas® Rack Code
68-23-724	21 x 7h	146cl 51¼oz	Bowl Round	6	GP-PR81
68-23-723	16 x 6.2h	71cl 25oz	Bowl Round	6	GP-PR81
68-23-722	12 x 5.6h	33cl 11½oz	Bowl Round	6	GP-PR81
68-23-721	8 x 5h	11cl 3¾oz	Dip Dish Round	12	GP-PR81



Platter Rectangular Relief

Code	Dimensions in cm	Capacity	Description	Pack	GoldPlas® Rack Code
68-28-706	30 x 18 x 1.6h	-	Platter Rectangular	6	GP-PR81



68-24-710



68-24-702

Espresso Cup and Mug Relief

Code	Dimensions in cm	Capacity	Description	Pack	GoldPlas® Rack Code
68-24-710	7 x 6.6h	10cl 3½oz	Espresso Cup Fits Saucer 68-24-726	6	GP-CR20
68-24-702	8 x 9.5h	32cl 11¼oz	Mug no Handle Fits Saucer 68-24-726	6	GP-CR20



Nara Grey

A smooth cream finish on the outside showcasing the pure colour of the stoneware body with a shiny grey crackle glaze finish on the inside offering practicality with rustic style.



Flat Round Plate

Code	Dimensions in cm	Capacity	Description	Pack	GoldPlas® Rack Code
68-21-709	27 x 2.5h	-	Flat Round Plate	6	GP-PR81
68-21-708	21 x 2.5h	-	Flat Round Plate	6	GP-PR81



Bowls Round

Code	Dimensions in cm	Capacity	Description	Pack	GoldPlas® Rack Code
68-23-728	21 x 7h	146cl 51¼oz	Bowl Round	6	GP-PR81
68-23-727	16 x 6.2h	71cl 25oz	Bowl Round	6	GP-PR81
68-23-726	12 x 5.6h	33cl 11½oz	Bowl Round	6	GP-PR81
68-23-725	8 x 5h	11cl 3¾oz	Dip Dish Round	12	GP-PR81



68-23-730



68-23-729

Bowls Square

Code	Dimensions in cm	Capacity	Description	Pack	GoldPlas® Rack Code
68-23-730	9 x 9 x 4.3h	19cl 6¾oz	Bowl Deep Flat Square	6	GP-PR81
68-23-729	9 x 9 x 2.3h	8cl 2¾	Bowl Flat Square	6	GP-PR81



68-23-732



68-23-731

Bowls Rectangular

Code	Dimensions in cm	Capacity	Description	Pack	GoldPlas® Rack Code
68-23-732	18 x 9 x 4.3h	42cl 14¾oz	Bowl Deep Rectangular	6	GP-PR81
68-23-731	18 x 9 x 2.3h	18cl 6¼oz	Bowl Flat Rectangular	6	GP-PR81



68-24-730



68-24-703



68-24-729

Cup, Mug and Saucer

Code	Dimensions in cm	Capacity	Description	Pack	GoldPlas® Rack Code
68-24-730	7 x 6.6h	10cl 3½oz	Espresso Cup Fits Saucer 68-24-729	6	GP-CR20
68-24-703	8 x 9.5h	32cl 11¼oz	Mug no Handle Fits Saucer 68-24-729	6	GP-CR20
68-24-729	15 x 2.5h	-	Saucer	6	GP-PR81



Nara Grey Relief

The grey glazed interior surface is contrasted against the embossed linear decoration on the cream exterior surface to give a modern yet rustic style.



PLAYGROUND



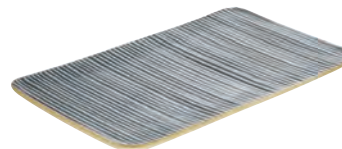
Flat Round Plate – Relief

Code	Dimensions in cm	Capacity	Description	Pack	GoldPlas® Rack Code
68-21-711	27 x 2.5h	-	Flat Round Plate	6	GP-PR81
68-21-710	21 x 2.5h	-	Flat Round Plate	6	GP-PR81



Bowls Round – Relief

Code	Dimensions in cm	Capacity	Description	Pack	GoldPlas® Rack Code
68-23-736	21 x 7h	146cl 51¼oz	Bowl Round	6	GP-PR81
68-23-735	16 x 6.2h	71cl 25oz	Bowl Round	6	GP-PR81
68-23-734	12 x 5.6h	33cl 11½oz	Bowl Round	6	GP-PR81
68-23-733	8 x 5h	11cl 3¾oz	Dip Dish Round	12	GP-PR81



Platter Rectangular – Relief

Code	Dimensions in cm	Capacity	Description	Pack	GoldPlas® Rack Code
68-28-707	30 x 18 x 1.6h	-	Platter Rectangular	6	GP-PR81



68-24-709



68-24-704

Cup, Mug and Saucer – Relief

Code	Dimensions in cm	Capacity	Description	Pack	GoldPlas® Rack Code
68-24-709	7 x 6.6h	10cl 3½oz	Espresso Cup Fits Saucer 68-24-729	6	GP-CR20
68-24-704	8 x 9.5h	32cl 11¼oz	Mug no Handle Fits Saucer 68-24-729	6	GP-CR20



Stacka Plate

Minimalist, stacking range with a Scandinavian elegance; perfect for modern presentation. The stacking capabilities make this a practical storage solution.



Plate

Code	Dimensions in cm	Capacity	Description	Pack	GoldPlas® Rack Code
66-51-120	3h x 30d	-	Plate	16	GP-PR81
66-51-121	3h x 26d	-	Plate	24	GP-PR81
66-51-123	3h x 20d	-	Plate	36	GP-PR81



Beverage and Café

Creative beverage solutions to suit all styles, combined with the exceptional durability and quality of a professional porcelain brand. Classic, contemporary and functional shapes provide versatile food service options for hot drinks, sandwiches and snacks.

Bistro



Teapot

Code	Dimensions in cm	Capacity	Description	Pack	GoldPlas® Rack Code
31-19-115	13 x 18.6d	75cl 26½oz	Bistro Teapot	6	GP-PR81



Jug

Code	Dimensions in cm	Capacity	Description	Pack	GoldPlas® Rack Code
31-14-135	10.5 x 7.9d	15cl 5¼oz	Bistro Jug	12	16E1
31-14-136	9.5 x 6.8d	10cl 3½oz	Bistro Jug	12	16E1



31-14-132



31-14-131



31-14-130



31-14-129



31-14-134

31-14-133

Cups, Mugs and Saucers

Code	Dimensions in cm	Capacity	Description	Pack	GoldPlas® Rack Code
31-14-132	4.3 x 7.1d	9cl 3¼oz	Bistro Espresso Cup Fits Saucer 31-14-134	12	36E1
31-14-131	5.8 x 10d	25cl 8¾oz	Bistro Cappuccino Cup Fits Saucer 31-14-133	12	16E1
31-14-130	6.7 x 10.7d	35cl 12¼oz	Bistro Cappuccino Cup Fits Saucer 31-14-133	12	16E1
31-14-129	7.3 x 11.8d	45cl 15¾oz	Bistro Latte Cup Fits Saucer 31-14-133	6	9E1
31-14-134	11d	-	Bistro Saucer	12	9E1
31-14-133	16d	-	Bistro Combi Saucer	12	GP-PR81



31-54-153

Sugar Bowl

Code	Dimensions in cm	Capacity	Description	Pack	GoldPlas® Rack Code
31-54-153	4.5 x 8.7d	15cl 5¼oz	Options Bowl	12	16E1



Options

Teapot

Code	Dimensions in cm	Capacity	Description	Pack	GoldPlas® Rack Code
31-59-127	10.1 x 15.3d	35cl 12¼oz	Options Teapot	6	GP-PR81

Coffee Pot

Code	Dimensions in cm	Capacity	Description	Pack	GoldPlas® Rack Code
31-59-124	12.4 x 12.7d	30cl 10½oz	Options Coffee Pot	6	GP-PR81

Jug

Code	Dimensions in cm	Capacity	Description	Pack	GoldPlas® Rack Code
31-54-146	6.2 x 5.6d	5cl 1¾oz	Options Mini Jug	12	GP-PR81
31-54-147	8.2 x 9.6d	15cl 5¼oz	Options Jug	12	GP-PR81



Open Sugar Bowl

Code	Dimensions in cm	Capacity	Description	Pack	GoldPlas® Rack Code
31-15-102	10d	24cl 8½oz	Coffeelings Open Sugar Bowl	12	GP-PR81



31-54-151
31-14-139

31-54-148

31-54-156



31-54-162

31-54-159
31-54-157

31-54-133



31-54-134

31-54-161

Cups, Mugs and Saucers

Code	Dimensions in cm	Capacity	Description	Pack	GoldPlas® Rack Code
31-54-151	6.3 x 10.5d	27cl 9½oz	Options Cup Fits Saucer 31-54-159 and 31-54-162	12	9E1
31-14-139	7.9 x 12d	44cl 15½oz	Options Large Cup Fits Saucer 31-14-133 and 31-54-134	6	9E1
31-54-148	6.6 x 6d	9cl 3¼oz	Options Espresso Cup Fits Saucer 31-54-157 and 31-54-161	12	36E1
31-54-156	11.2 x 7.7d	28cl 9¾oz	Options Mug Fits Saucer 31-54-159	6	16E2
31-54-159	15d	-	Options Coupe Saucer	12	GP-PR81
31-54-157	12d	-	Options Coupe Saucer	12	GP-PR81
31-54-161	11d	-	Options Triangular Saucer	12	GP-PR81
31-54-162	15d	-	Options Square Saucer	12	GP-PR81
31-14-133	16d	-	Bistro Combi Saucer	12	GP-PR81
31-54-134	17.4 x 14.9d	-	Enjoy Asymmetric Saucer	12	GP-PR81



Relation Today



Teapot

Code	Dimensions in cm	Capacity	Description	Pack	GoldPlas® Rack Code
28-59-152	11.9 x 13.4d	40cl 14oz	Relation Today Teapot	6	GP-PR81



Jug

Code	Dimensions in cm	Capacity	Description	Pack	GoldPlas® Rack Code
28-54-206	8.3 x 6.7d	15cl 5¼oz	Relation Today Jug	12	GP-PR81



Sugar Sachet Tray

Code	Dimensions in cm	Capacity	Description	Pack	GoldPlas® Rack Code
31-15-101	12 x 7d	26cl 9¼oz	Relation Today Sugar Sachet Tray	6	9E1



28-54-210
28-54-214



28-54-211
31-14-138

28-54-217
31-14-137

31-54-159
31-54-157

Cups, Mugs and Saucers

Code	Dimensions in cm	Capacity	Description	Pack	GoldPlas® Rack Code
28-54-210	7.6 x 9.6d	30cl 10½oz	Relations Today Cup Fits Saucer 31-54-159	6	9E1
28-54-214	6.3 x 9.3d	24cl 8½oz	Relations Today Cup Fits Saucer 31-54-159	12	9E1
28-54-211	5.4 x 5.4d	9cl 3¼oz	Relations Today Stacking Espresso Cup Fits Saucer 31-54-157	12	CR16
31-14-138	6.8x 8.5d	25cl 8¾oz	Relations Today Stacking Cup Fits Saucer 31-54-159	12	25E1
28-54-217	10.8 x 7.7d	28cl 9¾oz	Relations Today Mug	6	9E1
31-14-137	10.3 x 8.3d	35cl 12¼oz	Relations Today Stacking Mug Fits Saucer 31-54-159	6	25E1
31-54-159	15d	-	Options Coupe Saucer	12	GP-PR81
31-54-157	12d	-	Options Coupe Saucer	12	GP-PR81



Rectangular Plate

31-50-16 Modulus Rectangular Plate with recess

Dimensions in cm	Pack	GoldPlas® Rack Code
25.5 x 13	6	GP-PR81



Café Solutions



Dip Dish – Fits Rectangular Plate 31-50-116

Code	Dimensions in cm	Capacity	Description	Pack	GoldPlas® Rack Code
31-53-147	8 x 4h	11cl 3¾oz	Modulus Dip Dish	12	GP-PR81



Bowl – Fits Rectangular Plate 31-50-116

Code	Dimensions in cm	Capacity	Description	Pack	GoldPlas® Rack Code
28-53-179	13d	31cl 11oz	Relation Today Bowl	6	GP-PR81



Soup Bowl – Fits Rectangular Plate 31-50-116

Code	Dimensions in cm	Capacity	Description	Pack	GoldPlas® Rack Code
28-53-105	6 x 14d	25cl 8¾oz	Avantgarde Soup Bowl	6	GP-PR81



Shallow Dish – Fits Rectangular Plate 31-50-116

Code	Dimensions in cm	Capacity	Description	Pack	GoldPlas® Rack Code
28-58-109	10 x 2d	10cl 3½oz	Coffeelings Shallow Dish	6	GP-PR81



31-13-125


 31-53-130
31-53-129


31-54-153


 31-53-781
31-53-780

Bowls – Fits Asymmetric Saucer 31-54-134

Code	Dimensions in cm	Capacity	Description	Pack	GoldPlas® Rack Code
31-13-125	5.5 x 12d	36cl 12½oz	Bistro Bowl	12	9E1
31-53-130	7.8 x 12d	44cl 15½oz	Enjoy Bowl	12	GP-PR81
31-53-129	7.3 x 10.6d	35cl 12¼oz	Enjoy Bowl	6	GP-PR81
31-54-153	4.5 x 8.7d	15cl 5¼oz	Options Bowl	12	16E1
31-53-781	12d	36cl 12½oz	Smart Grey Bowl	12	GP-PR81
31-53-780	8d	7cl 2½oz	Smart Grey Bowl	24	GP-PR81


 31-14-131
31-14-130

 28-54-210
28-54-214


31-14-139

31-54-156

Cups and Mugs – Fits Asymmetric Saucer 31-54-134

Code	Dimensions in cm	Capacity	Description	Pack	GoldPlas® Rack Code
31-14-131	5.8 x 10d	25cl 8½oz	Bistro Cappuccino Cup Fits Saucer 31-14-133 and 31-54-134	12	16E1
31-14-130	6.7 x 10.7d	35cl 12¼oz	Bistro Cappuccino Cup Fits Saucer 31-14-133 and 31-54-134	12	16E1
28-54-210	7.6 x 9.6d	30cl 10½oz	Relation Today Cup Fits Saucer 31-54-159	6	9E1
28-54-214	6.3 x 9.3d	24cl 8½oz	Relation Today Cup Fits Saucer 31-54-159	12	9E1
31-14-139	7.9 x 12d	44cl 15½oz	Options Large Cup Fits Saucer 31-14-133 and 31-54-134	6	9E1
31-54-156	11.2 x 7.7d	28cl 9¾oz	Options Mug Fits Saucer 31-54-159 and 31-54-134	6	16E2



66-69-105



66-69-108


Cast Iron and Oriental Teapot

Code	Dimensions in cm	Capacity	Description	Pack	GoldPlas® Rack Code
66-69-105	20.8h x 16d	1.25L 44oz	Akita Cast Iron Teapot Black with Filter (large)	6	-
66-69-108	13.5h x 13.5d	35cl 12¼oz	Takara Cast Iron Teapot Black with Filter (small)	12	-



66-94-002



66-94-003


Milk Churns

Code	Dimensions in cm	Capacity	Description	Pack	GoldPlas® Rack Code
66-94-002	5h x 5d	7.5cl 2¾oz	Stainless Steel Mini Milk Churn •	48	-
66-94-003	7.5h x 5d	15cl 5¼oz	Stainless Steel Mini Milk Churn •	24	-



Sentido with its timeless silhouette sturdy base and round handle, offers functional simplicity that fits multiple beverage demands and trends.



Sentido

Tea and Coffee Glasses



20-25-100



20-25-101



20-25-102



20-25-103



04-25-144



04-25-152



03-29-104



03-15-184



27-78-131



Code	Pack	Code	Pack	Dimensions in cm	Capacity	Description	GoldPlus® Rack Code
20-25-100	6	77-00-230	12	7.5h x 5.1d	8cl 2¾oz	Sentido Espresso*	25E1
20-25-101	6	77-00-231	6	8.9h x 7.2d	22cl 7¾oz	Sentido Cappuccino*	16E1
20-25-102	6	77-00-232	6	11.2h x 8.3d	37cl 13oz	Sentido Americano*	9E1
20-25-103	6	77-00-233	6	14.2h x 6.8d	26cl 9¼oz	Sentido Liquor Coffee*	9E2
04-25-144	6	77-00-263	-	10h x 12d	44cl 15½oz	All Purpose Mug	16E2
04-25-152	12	-	-	10h x 8.7d	41cl 14½oz	Tempo Square Tea/Coffee Mug	16E1
03-29-104	12	77-00-301	-	12.7h x 7.8d	31cl 11oz	Warm Beverage Mug •	25E2
03-15-184	12	77-00-043	-	13.5h x 10.5d	47cl 16½oz	Drinking Jar (for Cold Beverages only)	16E2
27-78-131	24	-	-	7.3d	-	Lid Silver • (fits Artes drinking jars)	-

* Pre-warm glasses with hot water before use.



19-25-103



19-25-123



19-25-101



19-25-102



Code	Dimensions in cm	Capacity	Description	Pack	GoldPlas® Rack Code
19-25-103	11.6h x 8.6d	28cl 9½oz	Abeille Mug	6	25E1
19-25-123	11.9h x 8.4d	26cl 9¼oz	Lyonnais Mug	6	25E2
19-25-101	8.2h x 8.5d	27cl 9½oz	Ouessant Tea/Coffee Cup	6	25E1
19-25-102	11.7h x 8.5d	40cl 14oz	Ouessant Tea/Coffee Mug	6	25E1


 22-24-110
22-24-123

 22-24-124
22-24-111


22-29-150



22-29-118



Code	Dimensions in cm	Capacity	Description	Pack	GoldPlas® Rack Code
22-24-110	5.5h x 6.3d	8cl 2¾oz	Ischia Espresso Cup Glass Fits Saucer 22-24-111	24	49E1
22-24-123	7.2h x 8.2d	18cl 6¼oz	Ischia Cappuccino Cup Glass Fits Saucer 22-24-124	6	16E1
22-24-124	15d	-	Ischia Cappuccino Saucer Glass	36	GP-PR81
22-24-111	12d	-	Ischia Espresso Saucer Glass	48	GP-PR81
22-29-150	9.5h x 8d	24cl 8½oz	Debora Tea/Cappuccino Cup	6	16E1
22-29-118	10h x 8.9d	34cl 12oz	Tazza Latte	6	16E1



The Ouessant mug and cup has a brilliant lustre, thanks to its sleek embossed vertical lines. They can withstand thermal shocks of up to 120°C and are suitable for microwave use.


 19-25-101
Ouessant Tea/Coffee Cup

 19-25-102
Ouessant Tea/Coffee Mug

23-45-122
Cosy Mug

Cosy Mug a modern and classic design of tough, tempered glassware for the bar and table.

All Durablex products are tempered glass, making them extremely durable and resistant to breakage and thermal shock, resisting temperatures of up to 130°C – this means that all items can be used for hot beverages.



23-45-122

23-45-102
23-45-103

Tempered Glass

Code	Dimensions in cm	Capacity	Description	Pack	GoldPlas® Rack Code
23-45-122	10.5h x 8.6d	35cl 12¼oz	Cosy Mug	24	16E1
23-45-102	7.5h x 8.2d	22cl 7¾oz	Gigogne Cup	72	CR20
23-45-103	2.2h x 13.5d	-	Gigogne Saucer	72	GP-PR81



15-35-120



15-31-118



15-31-117



15-35-119



Duos

Innovative, double walled glassware, providing excellent thermal insulation for hot and cold beverages.

Code	Dimensions in cm	Capacity	Description	Pack	GoldPlas® Rack Code
15-35-120	11.3h x 8.6d	30cl 10½oz	Duos Latte Mug	12	16E2
15-31-118	11h x 9.1d	35cl 12¼oz	Duos Old Fashioned	12	16E2
15-31-117	15h x 9.4d	47cl 16½oz	Duos Cooler •	12	16E3
15-35-119	8.2h x 11.8d	39cl 13¾oz	Duos Large Cappuccino - Tea Mug	12	9E1

Coffee Glasses

DuraTuff® XTRATUFF



04-21-118



03-21-190



03-21-194



19-21-111



on's

Code	Pack	Code	Pack	Dimensions in cm	Capacity	Description	GoldPlas® Rack Code
04-21-118	+ 12	77-00-073	x 12	7.5h x 7d	11cl 3¾oz	Endeavor Espresso Shot	36E1
03-21-190	+ 12	77-00-193	x 12	10.3h x 7.5d	25cl 8¾oz	Paneled Juice/ Coffee Glass	25E2
03-21-194	+ 12	77-00-196	x 12	15.3h x 8.4d	47cl 16oz	Paneled Beverage/ Coffee Glass	25E3



Code	Dimensions in cm	Capacity	Description	Pack	GoldPlas® Rack Code
19-21-111	6.8h x 7d	10cl 3½oz	Zinc Espresso Cup	6	36E1

+ DuraTuff®. x XtraTuff®.



04-21-118
Endeavour
Espresso Shot



19-21-111
Zinc Espresso Shot



19-23-110
Soda Glass



Milkshakes and Sodas



16-23-110



22-23-101



19-23-110



LIBBEY

Code	Dimensions in cm	Capacity	Description	Pack	GoldPlas® Rack Code
16-23-110	18.5h x 8.5d	34cl 12oz	Soda Glass	12	25E3



Code	Dimensions in cm	Capacity	Description	Pack	GoldPlas® Rack Code
22-23-101	18h x 7.9d	34cl 12oz	Soda Glass	6	25E3



Code	Dimensions in cm	Capacity	Description	Pack	GoldPlas® Rack Code
19-23-110	18.1h x 8.4d	29cl 10¼oz	Antillaise Milk Goblet	6	25E3

Liqueur Coffee Glass



03-19-108



20-29-164



03-29-101



20-25-103



17-29-103



onis

Code	Pack	Code	Pack	Dimensions in cm	Capacity	Description	GoldPlas® Rack Code
03-19-108	36	77-00-299	-	14.5h x 7d	17cl 6oz	Georgian	25E2
20-29-164	12	77-00-302	12	14.5h x 7.5d	23cl 8oz	Handled Liqueur Coffee	25E2
03-29-101	24	77-00-300	-	16h x 6.2d	23cl 8oz	Handled Speciality Coffee	16E3
20-25-103	6	77-00-233	6	14.2h x 6.8d	26cl 9¼oz	Sentido Liquor Coffee*	9E2



Code	Dimensions in cm	Capacity	Description	Pack	GoldPlas® Rack Code
17-29-103	13.9h x 7d	23cl 8oz	Handled Liqueur Coffee	12	25E2

* Pre-warm glasses with hot water before use.



20-25-103
Sentido



03-19-108
Georgian



03-29-101
Handled Speciality
Coffee





VIDIVI **hd** HIGH DEFINITION
VETRI DELLE VENEZIE GLASS

Vidivi Glass Buffetware

The perfect selection to enhance you buffet or counter top offerings.

Vidivi Glass

- 'High Definition' glass with an ultra-smooth surface
- Amazing clarity and whiteness as a result of the almost complete absence of iron
- Lead and Cadmium free
- Microwave & Dishwasher Safe
- For feature and benefits of Vidivi Glassware see page 212



NEW



70-28-107



70-28-106



70-28-131

NEW

Footed Cake Stand and Dome

Code	Dimensions in cm	Capacity	Description	Pack	GoldPlas® Rack Code
70-28-107	27.7d x 20.5h	-	Glass Dome	1	-
70-28-106	33d x 11h	-	Banquet Footed Cake Stand	1	-
70-28-131	33d x 11h	-	Burano Footed Cake Stand	2	-



3 Tier Cake Stand

Code	Dimensions in cm	Capacity	Description	Pack	GoldPlas® Rack Code
70-28-108	15-21-28d x 33h	-	3 Tier Cake Stand	1	-



70-28-131
Burano Footed Cake Stand
70-28-107
Glass Dome

Torcello
BowlsHoney
Bowl

70-27-104



70-27-103



70-27-102

Torcello Bowl

Code	Dimensions in cm	Capacity	Description	Pack	GoldPlas® Rack Code
70-27-104	14d x 8h	72cl 25¼oz	Torcello Bowl	6	GP-PR81
70-27-103	11d x 6.5h	33cl 11½oz	Torcello Bowl	6	GP-PR81
70-27-102	8d x 4.5h	11cl 3¾oz	Torcello Bowl	6	GP-PR81



NEW

Honey Bowl

Code	Dimensions in cm	Capacity	Description	Pack	GoldPlas® Rack Code
70-27-120	13.5 x 7h	55cl 19¼oz	Honey Bowl	24	GP-PR81



NEW

Mix & Co Individual Bowl

Code	Dimensions in cm	Capacity	Description	Pack	GoldPlas® Rack Code
70-27-105	4.5h x 9d	19.5cl 6¾oz	Mix & Co Individual Bowl	24	16E1



Rialto Bowls

70-28-105

70-28-104

Code	Dimensions in cm	Capacity	Description	Pack	GoldPlas® Rack Code
70-28-105	35d x 7h	-	Rialto Bowl	4	GP-PR81
70-28-104	30d x 6h	-	Rialto Bowl	4	GP-PR81



70-28-112



70-28-111



70-28-110

Fenice Tray

Code	Dimensions in cm	Capacity	Description	Pack	GoldPlas® Rack Code
70-28-112	50d	-	Fenice Tray	4	GP-PR81
70-28-111	41d	-	Fenice Tray	4	GP-PR81
70-28-110	30d	-	Fenice Tray	12	GP-PR81



2 Section Dish

Code	Dimensions in cm	Capacity	Description	Pack	GoldPlas® Rack Code
70-27-101	13 x 6 x 3h	12cl 4¼oz	2 Section Dish	6	GP-PR81



3 Section Dish

Code	Dimensions in cm	Capacity	Description	Pack	GoldPlas® Rack Code
70-28-109	39 x 13 x 7h	-	3 Section Dish	1	GP-PR81



70-12-112
Hanging Spoon

Arta

70-27-112
Diva Bowl



Diva Bowl

Code	Dimensions in cm	Capacity	Description	Pack	GoldPlas® Rack Code
70-27-112	12 x 10d x 9h	33cl 11½oz	Diva Bowl	6	9E1



Hanging Spoon

Code	Dimensions in cm	Capacity	Description	Pack	GoldPlas® Rack Code
70-12-101	105L	-	Set of 6 hanging spoons	1	GP-FR500

Artes

NEW

VIDIVI
VETRI DELLE VENEZIE

NEW

NEW



70-28-103



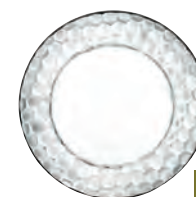
70-28-130



70-28-102



70-28-101



70-28-120

Charger Plates

Code	Dimensions in cm	Description	Pack	GoldPlas® Pack Code
70-28-103	32d	Accademia Charger Plate (Glass)	12	GP-PR81
70-28-130	32d	Burano Charger Plate (Glass)	12	GP-PR81
70-28-102	32d	Campiello Charger Plate (Glass)	12	GP-PR81
70-28-101	32d	Diva Charger Plate (Glass)	12	GP-PR81
70-28-120	32d	Honey Charger Plate (Glass)	12	GP-PR81


 03-29-146
03-28-147


23-49-108



23-49-109



75-47-118



Code	Dimensions in cm	Capacity	Description	Pack	GoldPlas® Rack Code
03-29-146	7.5d	9cl 3¼oz	Winchester Ramekin	36	25E1
03-28-147	8d	14.8cl 5oz	Winchester Ramekin •	12	GP-PR81



Code	Dimensions in cm	Capacity	Description	Pack	GoldPlas® Rack Code
23-49-108	4.1h x 8.5d	13cl 4½oz	Ramekin (Tempered Glass)	96	GP-PR81
23-49-109	5h x 10d	24cl 8½oz	Ramekin (Tempered Glass)	48	16E1



Code	Dimensions in cm	Capacity	Description	Pack	GoldPlas® Rack Code
75-47-118	10d	20cl 7oz	Pyrex Ramekin	12	16E1


 Lys Stackable
Bowl


Lys Stackable Bowl

Code	Dimensions in cm	Capacity	Description	Pack	GoldPlas® Rack Code
23-47-101	2.4h x 6d	3.5cl 1¼oz	Lys Stackable Bowl	96	25E2
23-47-102	3.1h x 7.5d	7cl 2½oz	Lys Stackable Bowl	96	GP-PR81
23-47-103	3.7h x 9d	12.5cl 4oz	Lys Stackable Bowl •	72	GP-PR81
23-47-104	4.3h x 10.5d	20.5cl 7¼oz	Lys Stackable Bowl •	72	GP-PR81
23-47-105	4.9h x 12d	31cl 11oz	Lys Stackable Bowl •	72	GP-PR81
23-47-106	5.6h x 14d	50cl 17½oz	Lys Stackable Bowl •	48	GP-PR81
23-47-107	7h x 17d	97cl 34oz	Lys Stackable Bowl •	24	GP-PR81



44-77-134
Stainless Steel
Cake Stand and
3 Acrylic Inserts



Cake Stands

This range of elegant cake stands offers a dramatic way in which to present Afternoon Tea, petit fours or canapés, bringing a sense of occasion to the table.



44-77-134
44-78-135

44-77-135
44-78-136

WNK®
FIRST IN FOOD SERVICE

Code	Dimensions in cm	Description	Pack	GoldPlas® Rack Code
44-77-134	34 x 14 x 40h	Stainless Steel Cake Stand and 3 Acrylic Inserts	2	-
44-78-135	-	Spare Acrylic Inserts	1	-
44-77-135	29 x 14 x 36h	Stainless Steel Cake Stand and 2 Acrylic Inserts	4	-
44-78-136	-	Spare Acrylic Inserts	1	-



44-77-117
Ferris Wheel Food Stand
+ 6 Stainless Steel Plates



44-77-111
Dubai 2 Tier Food
Stand Frame

31-11-103
31-11-105
Recommended
plates

44-77-121
Pyramid 3 Tier
Cake Stand
Stainless Steel

44-78-120
Glass Plate Set
for the Pyramid



WNK®
FIRST IN FOOD SERVICE

Code	Dimensions in cm	Description	Pack	GoldPlas® Rack Code
44-77-111	29 x 27 x 50h	Dubai 2 Tier Food Stand Frame (No Plates)	2	-
Recommended plates				
31-11-103	24d	Purity Rimmed Plate*	6	GP-PR81
31-11-105	29d	Purity Rimmed Plate*	6	GP-PR81
44-77-117	37 x 17 x 31h 13d	Ferris Wheel Food Stand + 6 Stainless Steel Plates	1	-
44-77-121	33 x 21 x 36h	Pyramid 3 Tier Cake Stand Stainless Steel (No Plates)	2	-
44-78-120	16 x 4w 20 x 15w 30 x 19w	Glass Plate Set for the Pyramid	1	-

Cake Forks



44-11-036



44-11-535



44-11-005



76-11-058

WNK®
FIRST IN FOOD SERVICE

Code	Size	Description	Pack	GoldPlas® Rack Code
44-11-036	18	Deluxe Dessert Fork	12	GP-FR500
44-11-535	14	Silhouette Cake Fork	12	GP-FR500
44-11-005	15	Tulip Cake Fork	12	GP-FR500

Saboinelli
italian bakery mixings

Code	Size	Description	Pack	GoldPlas® Rack Code
76-11-058	16	Time Cake Fork	12	GP-FR500

* Variety of colours and rimmed plates also available.



NEW



70-28-106
Footed Cake Stand
70-28-107
Glass Dome



70-28-131
Footed Cake Stand



70-28-107

70-28-106



70-28-131

NEW

VIDIVI
VETRI BELLE VENEZIE

Code	Dimensions in cm	Description	Pack	GoldPlas® Rack Code
70-28-107	27.7d x 20.5h	Glass Dome	1	-
70-28-106	33d x 11h	Banquet Footed Cake Stand	1	-
70-28-131	33d x 11h	Burano Footed Cake Stand	2	-

70-28-108
3 Tier Cake Stand



66-29-103
Retro 3 Tier Cake
Stand Plates



70-28-108



66-29-103

VIDIVI
VETRI DELLE VENEZIE

Code	Dimensions in cm	Description	Pack	GoldPlas® Rack Code
70-28-108	15, 21, 28d x 33h	3 Tier Cake Stand	1	-



Code	Dimensions in cm	Description	Pack	GoldPlas® Rack Code
66-29-103	18, 25, 29d x 34h	Retro 3 Tier Stand Plates	1	-



Desserts

An innovative collection of dessert dishes in metal, glass and ceramic designed to make a real statement and offer a perfect finish to a meal.



14-38-104
Atelier Coupe



14-38-104



03-18-106



03-23-105



03-13-103



16-23-104



16-23-107



16-23-147



03-23-102



16-23-101

Luigi Bormioli
ITALY

Code	Dimensions in cm	Capacity	Description	Pack	GoldPlas® Rack Code
14-38-104	15.8h x 9.6d	20cl 7oz	Atelier Coupe (Crystal)	24	16E3

LIBBEY

OX

Code	Pack	Code	Pack	Dimensions in cm	Capacity	Description	GoldPlas® Rack Code
03-18-106	12	77-00-167	-	8.9h x 11.1d	17cl 6oz	Bubble 2 Piece	16E3
03-23-105	36	77-00-115	-	10.2h x 10d	13cl 4½oz	Coupe Jacques	16E2
03-13-103	12	77-00-051	-	8h x 15d	24cl 8½oz	Embassy Dessert	16E2
16-23-104	12	77-00-007	-	7.6h x 9d	14cl 5oz	Ice Cream Cup	16E1
16-23-107	12	-	-	13h x 9.8d	22cl 7¾oz	Tulip Sundae	16E2
16-23-147	12	77-00-023	-	18h x 12d	60cl 21oz	Hoffman House Chabela	9E3
03-23-102	12	-	-	15.3h x 9.7d	28cl 9¾oz	Hoffman House Panelled	16E3
16-23-101	24	77-00-114	-	23 x 12w	-	Banana Split Dish	GP-PR81

⊙ Libbey Safedge Rim Guarantee. ■ Libbey Safedge Rim & Foot Guarantee.



19-28-808

19-28-108

19-28-109

19-23-137

19-23-136

19-23-140

19-23-160

19-28-110

19-28-111

23-43-100



Code	Dimensions in cm	Capacity	Description	Pack	GoldPlas® Rack Code
19-28-808	8.8h x 11.6d	13cl 4½oz	Bubble Sundae Smoked	6	9E1
19-28-108	8.8h x 11.6d	13cl 4½oz	Bubble Sundae Clear	6	9E1
19-28-109	9h x 12d	13cl 4½oz	Ouessant Bubble Sundae	6	9E1
19-23-137	10.7h x 14d	25cl 8¾oz	Circée Sundae	6	9E2
19-23-136	16.9h x 11.5d	27cl 9½oz	Circée Tall Sundae	6	9E3
19-23-140	15.3h x 10d	20cl 7oz	Fidji Clear	6	16E3
19-23-160	8.2h x 10d	23cl 8oz	Tahiti Dessert Dish	6	16E1
19-28-110	7.8h x 9.2d	15cl 5¼oz	Vega Dessert Dish Small	6	16E1
19-28-111	9.3h x 10.5d	22.5cl 7¾oz	Vega Dessert Dish Large	6	16E1



Code	Dimensions in cm	Capacity	Description	Pack	GoldPlas® Rack Code
23-43-100	10h x 9.9d	25cl 8¾oz	Gigogne Sundae Clear	18	16E2

19-28-110 and 19-28-111
Vega Dessert Dishes23-43-100
Gigogne Sundae
Clear



70-27-112 Diva
70-12-101 Hanging Spoon



66-53-100
Ice Cream Cones



70-27-112



70-12-101



11-23-104



22-23-107



11-23-151



11-23-103



02-23-115



11-23-114



66-58-112



66-53-100

VIDIVI

VEHICOLI DELLA SODALITÀ

Code	Dimensions in cm	Capacity	Description	Pack	GoldPlas® Rack Code
70-27-112	12 x 10d x 9h	33cl 11½oz	Diva Bowl	6	9E1
70-12-101	105L	-	Set of 6 hanging spoons	1	GP-FR500



Code	Dimensions in cm	Capacity	Description	Pack	GoldPlas® Rack Code
11-23-104	15.2h x 7.7d	14cl 5oz	Crimped Sundae	12	25E3
22-23-107	8.5h x 10d	18cl 6¼oz	Mughetto	12	16E1
11-23-151	13.6h x 13.5d	23cl 8oz	Springtime	12	9E2
11-23-103	15.6h x 10.7d	20cl 7oz	Tulip Sundae	12	16E3
02-23-115	18h x 12d	51cl 18oz	Hoffman House Weiss Goblet	12	9E3
11-23-114	11.5h x 12d	40cl 14oz	Tiki	12	9E2
66-58-112	3h x 12d	-	Crème Brûlée Dishes	12	GP-PR81
66-53-100	11h x 8.5d	12.5cl 4½oz	Ice Cream Cones	48	25E2



46-85-209



46-85-210



48-85-102



48-85-103



48-85-104



48-85-105



48-85-106



48-85-107



Code	Dimensions in cm	Capacity	Description	Pack	GoldPlas® Rack Code
48-85-102	8.5h x 11d	25cl 8½oz	Hammered Black Nickel Sundae	1	-
48-85-103	7h x 10d	25cl 8½oz	Hammered Black Nickel Sophiya Bowl	1	-
48-85-104	10h x 10d	35.5cl 12½oz	Hammered Black Nickel Double Wall Bowl	1	-
48-85-105	8.5h x 11d	25cl 8½oz	Hammered Copper Double Wall Sundae	1	-
48-85-106	7h x 10d	25cl 8½oz	Hammered Copper Double Wall Sophiya Bowl	1	-
48-85-107	10h x 10d	35.5cl 12½oz	Hammered Copper Double Wall Bowl	1	-
46-85-210	12h x 9.7d	20cl 7oz	Hammered Copper Goblet with Non Allergenic Lining	1	-
46-85-209	16h x 9.7d	20cl 7oz	Tall Copper Goblet with Non Allergenic Lining	1	-

All Copper and Stainless Steel items are handwash only.


 48-85-209
Tall Copper Goblet

 46-85-210
Hammered Copper Goblet

Hammered Copper Double Wall Bowls





03-18-106
Bubble 2 Piece

A collection of small glasses, dishes, miniature plates, tasting forks and spoons – perfect for presentation of amuse bouche, tasting dishes, sharing plates and entrees.



Tasting



14-51-180



15-42-141



03-18-106



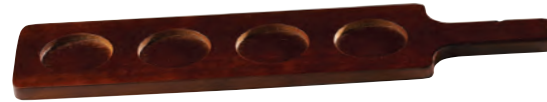
04-21-118



03-18-170



03-13-103



03-08-181

Luigi Bernini
ITALY

Code	Dimensions in cm	Capacity	Description	Pack	GoldPlas® Rack Code
14-51-180	8.8h x 4.0d	7cl 2½oz	Classico Shot (Crystal)	24	49E1
15-42-141	8.8h x 4d	7cl 2½oz	Mixology Shot (Crystal)	24	49E1



onis

Code	Pack	Code	Pack	Dimensions in cm	Capacity	Description	GoldPlas® Rack Code
03-18-106	12	77-00-167	-	8.9h x 11.1d	17cl 6oz	Bubble 2 Piece	16E3
04-21-118	+ 12	77-00-073	x 12	7.5h x 7d	11cl 3¾oz	Endeavor Espresso Shot	36E1
03-18-170	12	77-00-052	-	9.5h x 8d	9cl 3¼oz	Embassy Mini Martini	25E1
03-13-103	12	77-00-051	-	8h x 15d	24cl 8½oz	Embassy Dessert	16E2
03-08-181	12	-	-	42.5 x 9.7w	-	Wooden Tasting Paddle	-



19-28-108



19-28-808



19-28-109



19-21-106



19-21-103



19-21-104



19-21-105



19-21-111



23-41-131

LA
ROCHÈRE
FRANCE

Code	Dimensions in cm	Capacity	Description	Pack	GoldPlas® Rack Code
19-28-108	8.8h x 11.6d	13cl 4½oz	Bubble Sundae Clear	6	9E1
19-28-808	8.8h x 11.6d	13cl 4½oz	Bubble Sundae Smoked	6	9E1
19-28-109	9h x 12d	13cl 4½oz	Quessant Bubble Sundae	6	9E1
19-21-106	5.3h x 7.1d	10cl 3½oz	Delice Amuse-Bouche	6	36E1
19-21-103	5.7h x 7d	8cl 2¾oz	Quessant Amuse-Bouche	6	36E1
19-21-104	7h x 7.4d	11cl 3¾oz	Riviera Amuse-Bouche	6	25E1
19-21-105	4h x 6.5d	5cl 1¾oz	Sweet Amuse-Bouche	6	36E1
19-21-111	6.8h x 7d	10cl 3½oz	Zinc Amuse-Bouche	6	36E1

MADE IN FRANCE
DURALEX

Code	Dimensions in cm	Capacity	Description	Pack	GoldPlas® Rack Code
23-41-131	7.7h x 7.7d	22cl 7¾oz	Wave Stackable	72	25E1


 19-21-106
Delice

 19-21-105
Sweet

 19-21-103
Quessant

 19-21-104
Riviera

 19-28-109
Quessant



27-19-115



Code	Dimensions in cm	Capacity	Description	Pack	GoldPlas® Rack Code
27-19-115	8.5h x 4.5d	7.2cl 2½oz	Mini Terrine Jar •	48	49E1



44-81-125



44-82-125

WNK®
FIRST IN FOOD SERVICE

Code	Dimensions in cm	Capacity	Description	Pack	GoldPlas® Rack Code
44-81-125	14	-	Tasting Fork ^{18/10} Stainless Steel	4	GP-FR500
44-82-125	13	-	Tasting Spoon ^{18/10} Stainless Steel	4	GP-FR500

Mini Terrine jars must be fully disassembled before Dishwash

Thermic Glass

Made from double walled Borosilicate glass and designed in Italy with a passion for food.

- The double walled construction – Frames the food providing high visibility and keeps hot and cold food at the optimum temperature for longer
- Very light weight and strong blown glass – Durable enough to work in the foodservice environment
- Thermal shock resistant – Ideal for serving hot and cold food
- Microwave and Dishwasher Safe – Flexible use in the commercial kitchen
- Double handled dishes for easy positioning and handling



Luigi Bormioli
ITALY



15-37-101



15-37-102



15-37-103



15-34-100



15-37-100

Luigi Bormioli
ITALY

Code	Dimensions in cm	Capacity	Description	Pack	GoldPlas® Rack Code
15-37-101	5.4h x 10.4d	27cl 9½oz	Thermic Double Walled Glass Pot with Dual Handles •	2	GP-PR81
15-37-102	9.3h x 9.5d	25cl 8¾oz	Thermic Double Walled Glass Pot with Dual Handles and Lid	2	GP-PR81
15-37-103	5.4h x 7.1d	12cl 4¼oz	Thermic Double Walled Glass Pot with Dual Handles	2	GP-PR81
15-34-100	9.2h x 6.8d	14.5cl 5oz	Thermic Double - Walled Glass Jug	2	GP-PR81
15-37-100	4.2h x 10.8d	17.5cl 6oz	Thermic Double - Walled Glass Wok with Dual Handles •	2	GP-PR81



onís

Bubble 2 Piece

Code	Pack	Code	Pack	Dimensions in cm	Capacity	Description	GoldPlas® Rack Code
03-18-106	12	77-00-167	-	8.9h x 11.1d	17cl 6oz	Bubble 2 Piece	16E3



66-57-107



66-57-106



Lobster Pincers and Forks

Code	Dimensions in cm	Capacity	Description	Pack	GoldPlas® Rack Code
66-57-107	13.5 x 5.5w	-	Lobster Pincers	1	-
66-57-106	18	-	Lobster Forks (Set of 6)	1	-



66-56-120
66-56-112



66-56-138
66-56-132



Mussel Casserole Dish and Cover

Code	Dimensions in cm	Capacity	Description	Pack	GoldPlas® Rack Code
66-56-120	20d	2L 70½oz	Mussel Casserole Dish and Cover (Black)	6	-
66-56-112	12d	50cl 17½oz	Mussel Casserole Dish and Cover (Black)	6	-
66-56-138	18d	1L 35¼oz	Mussel Casserole Dish and Cover (White)	6	-
66-56-132	12d	50cl 17½oz	Mussel Casserole Dish and Cover (White)	6	-

NEW



31-14-151

NEW



31-14-150

BAUSCHER Chip Mugs

Code	Dimensions in cm	Capacity	Description	Pack	GoldPlas® Rack Code
31-14-151	9.6 x 9h	34cl 12oz	Chip Mug	6	GP-PR81
31-14-150	10.1 x 6.7h	28cl 9¾oz	Chip Mug	6	GP-PR81



46-18-107



48-85-104



48-85-107



45-24-261



66-25-188

Ariza Fries Buckets

Code	Dimensions in cm	Capacity	Description	Pack	GoldPlas® Rack Code
46-18-107	11h x 7.8d	40cl 14oz	Stainless Steel Tin Can	1	-
48-85-104	10 x 10d	35cl 12¼oz	Hammered Black Nickel Double Wall Tumbler	1	-
48-85-107	10 x 10d	35cl 12¼oz	Hammered Copper Double Wall Tumbler	1	-
45-24-261	13h x 14d	-	Giant Fries Bucket	6	-
66-25-188	10h x 10d	-	French Fries Bucket	24	-



Matt Black wire baskets for table top presentation with a difference. Ideal for serving fries, tempura, bread or sides dishes. They can be used for both hot and cold foods, the options are endless.



66-45-501



66-45-502



66-45-503

Ariza Wire Baskets

Code	Dimensions in cm	Description	Pack	GoldPlas® Rack Code
66-45-501	21 x 10 x 7.5h	Black Round Wire Basket with handle	1	-
66-45-502	23 x 12 x 8h	Black Round Wire Basket with handle	1	-
66-45-503	23-x 10 x 7.5h	Black Square Wire Basket with handle	1	-

All Copper, Stainless Steel and Black Wire Baskets items are not suitable for Dishwashers.



Ceraflame

Ceraflame is a unique 'One Dish Solution' allowing meals to be prepared, frozen and then placed directly into an oven, even a pizza oven, or over a direct flame without suffering from cracking. Lightweight, scratch resistant, microwave and dishwasher proof.

Ceraflame
cookware



29-55-701



29-55-702

Hammered Round Baking Dish

Code	Dimensions in cm	Capacity	Description	Pack	GoldPlas® Rack Code
29-55-701	20d	-	Hammered Black Round Baking Dish	24	GP-PR81
29-55-702	20d	-	Hammered Copper Round Baking Dish	24	GP-PR81



Round Eared Dish

Code	Dimensions in cm	Capacity	Description	Pack	GoldPlas® Rack Code
29-53-120	20 x 24w	-	Round Eared Dish	24	GP-PR81
29-53-122	22 x 27w	-	Round Eared Dish	24	GP-PR81



Round Shallow Bowl

Code	Dimensions in cm	Capacity	Description	Pack	GoldPlas® Rack Code
29-52-101	16d	-	Round Shallow Bowl	8	GP-PR81



29-55-116



29-55-115



29-55-703



29-55-704

Mini Pan

Code	Dimensions in cm	Capacity	Description	Pack	GoldPlas® Rack Code
29-52-106	7h x 12d	60cl 21oz	Mini Pan with Handle	24	GP-PR81
29-55-116	11h x 12d	60cl 21oz	Mini Pan with Handle and Ceramic Lid	24	GP-PR81
29-52-105	7h x 12d	60cl 21oz	Mini Pan with Wings	24	GP-PR81
29-55-115	11h x 12d	60cl 21oz	Mini Pan with Wings and Ceramic Lid	24	GP-PR81

Hammered Premier Casseroles

Code	Dimensions in cm	Capacity	Description	Pack	GoldPlas® Rack Code
29-55-703	11d	60cl 21oz	Hammered Black Premier Casserole	24	GP-PR81
29-55-704	11d	60cl 21oz	Hammered Copper Premier Casserole	24	GP-PR81



Founded in 1915, the Pyrex® brand has always anticipated the latest trends in cookware. Throughout the years Pyrex® has come up with new ideas that offer a complete solution to all cookware requirements, including preparation, cooking, freezing, storing and presentation at the table.

By creating revolutionary products, Pyrex® has become the ideal Chefs partner from kitchen to table. Being oven safe, dishwasher safe and stored in the fridge or freezer. Made from a durable healthy, sustainable thermic shock material and having a ten year guarantee.



EXTREME RESISTANCE
VERRE-GLASS
BOROSILICATE

220°C
THERMAL SHOCK
CHOC THERMIQUE



Oven



Micro-wave



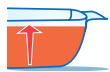
Freezer



Dishwasher



Irresistible
Oval Roaster



Deeper:
less planning
more preparing



Large handles:
easy to grasp, even
with potholders

Irresistible Oval Roaster

Code	Dimensions in cm	Capacity	Description	Pack	GoldPlas® Rack Code
75-47-107	35 x 24 x 6	2.8L 94%oz	Oval Roaster	6	-
75-47-108	39 x 27 x 4	4L 140%oz	Oval Roaster	4	-

Oven safe to 300°C and thermal shock resistant up to 220°C.



Irresistible Rectangular Roaster



Deeper:
less planning
more preparing



Large handles:
easy to grasp, even
with potholders

Irresistible Rectangular Roaster

Code	Dimensions in cm	Capacity	Description	Pack	GoldPlas® Rack Code
75-47-104	31 x 20 x 6	2.1L 71oz	Rectangular Roaster	6	-
75-47-105	35 x 23 x 6	2.9L 98oz	Rectangular Roaster	3	-
75-47-106	39 x 25 x 6	3.8L 128½oz	Rectangular Roaster	6	-

Oven safe to 300°C and thermal shock resistant up to 220°C.



Oval Casserole



Round Casserole



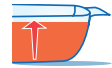
Large handles:
easy to grasp, even
with potholders



Deeper:
less planning
more preparing



Large handles:
easy to grasp, even
with potholders



Deeper:
less planning
more preparing

Oval Casserole with Lid

Code	Dimensions in cm	Capacity	Description	Pack	GoldPlas® Rack Code
75-47-113	38 x 23 x 15	4.4 + 1.4 L 148% + 47%oz	Oval Casserole with Lid	6	-

Round Casserole with Lid

Code	Dimensions in cm	Capacity	Description	Pack	GoldPlas® Rack Code
75-47-112	38 x 27 x 14	3.5 + 1.5L 118% + 52%oz	Round Casserole with Lid	3	-

Oven safe to 300°C and thermal shock resistant up to 220°C.



Round Casserole with Lid

Code	Dimensions in cm	Capacity	Description	Pack	GoldPlas® Rack Code
75-47-127	21 x 18 x 9	1.1 + 0.3L 38¾ + 17oz	Round Casserole with Lid	3	-
75-47-126	24 x 20 x 11	1.6 + 0.5L 56¼ + 17½oz	Round Casserole with Lid	3	-
75-47-128	27 x 23 x 11	2.2 + 0.8L 77½ + 31oz	Round Casserole with Lid	3	-



Wavy sides:
to keep your pie
crust in optimal
condition



Quiche/Flan Dish

Code	Dimensions in cm	Capacity	Description	Pack	GoldPlas® Rack Code
75-47-119	31d	1.8L 60%oz	Quiche/Flan Dish	6	-



Ramekins

Code	Dimensions in cm	Capacity	Description	Pack	GoldPlas® Rack Code
75-47-118	10d	20cl 7oz	Ramekin	12	16E1

Oven safe to 300°C and thermal shock resistant up to 220°C.



Round Casserole



Ramekins



Quiche/Flan Dish

Ariza



Oval Dish


PYREX

Bowl



Oval Dish

Code	Dimensions in cm	Capacity	Description	Pack	GoldPlas® Rack Code
75-47-101	30 x 21 x 6	2L 70½oz	Oval Dish	4	-
75-47-102	35 x 24 x 6	3L 105½oz	Oval Dish	6	-
75-47-103	39 x 27 x 6	4L 140¾oz	Oval Dish	4	-



Bowls

Code	Dimensions in cm	Capacity	Description	Pack	GoldPlas® Rack Code
75-47-114	14d	50cl 17½oz	Bowl	12	-
75-47-115	17d	1L 35¼oz	Bowl	6	-
75-47-116	21d	2L 70½oz	Bowl	6	-
75-47-117	24d	3L 105½oz	Bowl	6	-

Oven safe to 300°C and thermal shock resistant up to 220°C.



Measuring Jug



75-44-101



75-44-102

Measuring Jugs

Code	Dimensions in cm	Capacity	Description	Pack	GoldPlas® Rack Code
75-44-101	16 x 12 x 12	50cl 17½oz	Measuring jug	6	-
75-44-102	21 x 16 x 11	1L 35½oz	Measuring jug	6	-



Artes Crème Brûlée

Code	Dimensions in cm	Capacity	Description	Pack	GoldPlas® Rack Code
66-58-112	3h x 12d	-	Crème Brûlée Dishes	12	GP-PR81

Ramekins



75-47-118

23-49-108
23-49-109

PYREX

Code	Dimensions in cm	Capacity	Description	Pack	GoldPlas® Rack Code
75-47-118	10d	20cl 7oz	Pyrex Ramekin	12	16E1



Code	Dimensions in cm	Capacity	Description	Pack	GoldPlas® Rack Code
23-49-108	4.1h x 8.5d	13cl 4½oz	Ramekin (Tempered Glass)	96	GP-PR81
23-49-109	5h x 10d	24cl 8½oz	Ramekin (Tempered Glass)	48	16E1



44-54-151



44-54-153



44-54-093



44-54-094

Chafers Features

- Brake mechanism means roll top covers stay open at any angle required.
- Removable covers for easy cleaning.
- Steam holes in lids prevent condensation; water is channelled into water pan preventing unsightly run-off.
- Fuel burners, or electric heating elements may be used on all roll-top chafers.
- Integral wind block facilitates outdoor use of fuel burners.

WNK® FIRST IN FOOD SERVICE Chafers 18/10

Code	Dimensions in cm	Capacity	Description	Pack	GoldPlus® Rack Code
44-54-151	66 x 45 x 43h	8.5 L	Oblong Roll Top Chafers and Stainless Steel Insert (Chrome Legs)	1	-
44-54-153	51 x 50 x 46h	4.5 L	Round Roll Top Chafers and Stainless Steel Insert (Chrome Legs)	1	-
44-54-093	39 x 50 x 18h	4.4 L	Round Induction Chafers and Stainless Steel Insert	1	-
44-54-094	40 x 51 x 20h	6.3 L	Square Induction Chafers and Stainless Steel Insert	1	-



44-53-932



44-54-931



44-54-941



44-53-911



44-53-901
44-53-902
44-53-903

WNK®
FIRST IN FOOD SERVICE **Porcelain Inserts**

Code	Dimensions in cm	Capacity	Description	Pack	GoldPlas® Rack Code
44-53-932	38 x 6h	-	Porcelain Insert with Divider for Round Induction Chafer	3	-
44-54-931	38 x 6h	2.5 L	Porcelain Insert for Round Induction Chafer	3	-
44-54-941	38 x 38 x 7h	3.5 L	Porcelain Insert for Square Induction Chafer	5	-
44-53-911	39 x 5h	4 L	Porcelain Insert for Round Roll Top Chafer	3	-

Inserts for Oblong Roll Top Chafer

44-53-901	53 x 32 x 7h	8 L	1/4 Food Pan (Porcelain)	3	-
44-53-902	32 x 26 x 7h	3 L	1/2 Food Pan (Porcelain)	4	-
44-53-903	32 x 17 x 7h	1.5 L	1/3 Food Pan (Porcelain)	12	-



45-19-830



45-74-180



Nantucket Punch Barrel with Metal Tap and Stand

Code	Dimensions in cm	Capacity	Description	Pack	GoldPlas® Rack Code
45-19-830	36.5h x 25d	8.5L	Nantucket Punch Barrel with Metal Tap	1	-
45-74-180	11.8h x 21w	-	Wooden Block Stand for Punch Barrel 45-19-830	1	-

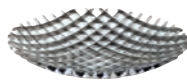
Wood items are not suitable for Dishwashers.



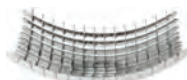
66-82-136
Hanging Fruit Basket



44-82-120



44-82-122



44-82-123



Fruit Baskets

Code	Dimensions in cm	Capacity	Description	Pack	GoldPlas® Rack Code
44-82-120	23 x 23 x 10.5h	-	Fruit Basket	20	-
44-82-122	5h x 30d	-	Round Fruit Basket	10	-
44-82-123	28.5sq x 9.5h	-	Square Fruit Basket	10	-
66-82-136	45h	-	Hanging Fruit Basket	1	-



Bread Stick Holder



Code	Dimensions in cm	Description	Pack	GoldPlas® Rack Code
44-64-100	16 x 11 x 24.5h	Bread Stick Holder	12	-



66-94-002



66-94-003



Stainless Steel Mini Milk Churns

Code	Dimensions in cm	Capacity	Description	Pack	GoldPlas® Rack Code
66-94-002	5h x 5d	7.5cl 2¾oz	Stainless Steel Mini Milk Churn •	48	-
66-94-003	7.5h x 5d	15cl 5¼oz	Stainless Steel Mini Milk Churn •	24	-



66-56-501



66-57-502



66-57-503



Stainless Steel Pans

Code	Dimensions in cm	Capacity	Description	Pack	GoldPlas® Rack Code
66-56-501	4.5 x 8 x 14.8w	-	Stainless Steel Mini Saucepan •	4	-
66-57-502	5.5 x 10 x 18.5w	-	Stainless Steel Mini Frying Pan •	4	-
66-57-503	7 x 11.5 x 20w	-	Stainless Steel Mini Wok Pan	4	-

All Stainless Steel items are handwash only.

NEW

Charger Plates



Tableware | Buffet Service | Chargers



70-28-103



70-28-130

NEW



70-28-102



70-28-101



70-28-120

NEW



66-83-101



46-93-181

VIDIVI
SERVIZIO CLIENTI



Code	Dimensions in cm	Description	Pack	GoldPlas® Rack Code
70-28-103	32d	Accademia Charger Plate (Glass)	12	GP-PR81
70-28-130	32d	Burano Charger Plate (Glass)	12	GP-PR81
70-28-102	32d	Campielo Charger Plate (Glass)	12	GP-PR81
70-28-101	32d	Diva Charger Plate (Glass)	12	GP-PR81
70-28-120	32d	Honey Charger Plate (Glass)	12	GP-PR81

Code	Dimensions in cm	Description	Pack	GoldPlas® Rack Code
66-83-101	33d	Charger Plate (Stainless Steel)	1	-
46-93-181	33d	Charger Plate (Copper)	1	-

All Copper and Stainless Steel items are handwash only.



Lock-Eat® *Luigi Bormioli*
ITALY

The Lock-Eat glassware food and juice Jars have a glass lid that can be completely removed making them ideal for table service, compact in size and easy to wash in a dishwasher.

Designed to present table serving solutions in a functional and innovative way. The food jars are perfect for single serving portions such as amuse bouche, appetisers, finger foods and desserts. The carafe style jars are ideal for all types of drinks including juices, smoothies and water.

The flexibility of the design means they can also be used for storing, preserving, canning and fermenting due to the superior airtight properties of the glass lid.

Innovative detachable lids



Features and Benefits

- **Fully detachable glass lid and clamp** – Easy to fill, easy to present with food in, easy to open and close and easy to wash.
- **Glass allows for full visibility of food and drink** – Ideal for all types of table service from breakfast through to dinner.
- **Smaller sizes** – Ideal for single serving portions
- **Food jars are stackable** – Space saving storage.
- **Durable glassware** – Can be reused over and over again and fully recyclable.
- **Airtight closure** – Prevents food bacteria. Suitable for storing, canning, preserving and fermenting.
- **Dishwasher and Freezer safe.**



15-16-102
15-16-104
15-16-106

lock-eat® *Luigi Bormioli* ITALY

“The ultimate store and serve solution”



15-19-103



15-19-105



15-19-107



15-19-109



15-19-110



15-19-112



15-19-115



15-19-116



Removable lids



Code	Dimensions in cm	Capacity	Description	Pack	GoldPlas® Rack Code
15-16-102	16.7h x 7d	25cl 8½oz	Carafe	12	36E3
15-16-104	21.1h x 7.3d	50cl 17½oz	Carafe	12	25E4
15-16-106	27.7h x 10.2d	1L 35¼oz	Carafe	12	16E6
15-19-103	7.6h x 8.4d	12.5cl 4¼oz	Terrine	24	25E1
15-19-105	9.7h x 8.4d	20cl 7oz	Terrine	24	25E1
15-19-107	14h x 8.4d	35cl 12¼oz	Terrine	12	25E2

Code	Dimensions in cm	Capacity	Description	Pack	GoldPlas® Rack Code
15-19-109	10.2h x 12d	50cl 17½oz	XL Food Jar	6	9E2
15-19-110	13.7h x 12d	75cl 26½oz	XL Food Jar	6	9E2
15-19-112	17h x 12d	1L 35¼oz	XL Food Jar	6	9E3
15-19-115	15.5h x 14.5d	1.5L 52¼oz	Handy Jar	6	9E3
15-19-116	19h x 14.5d	2L 70½oz	Handy Jar	6	9E4

Lock-Eat® jars must be fully disassembled before Dishwasher usage.



Preserving and Storage

Useful jars, in a wide range of sizes. Ideal for storing ingredients, or as an innovative way of serving food to the table.



27-19-115



27-19-101



27-19-102

27-19-104
27-19-105

27-19-106



27-19-107



27-19-108



27-19-109



Code	Dimensions in cm	Capacity	Description	Pack	GoldPlas® Rack Code
27-19-115	8.5h x 4.5d	7.2cl 2½oz	Mini Terrine Jar •	48	49E1
27-19-101	7h x 7.5d	12.5cl 4½oz	Terrine Jar and Clip Lid	12	25E1
27-19-102	8.4h x 8d	20cl 7oz	Terrine Jar and Clip Lid	12	25E1
27-19-104	10.8h x 9.5d	50cl 17½oz	Preserving Jar and Clip Lid	12	16E2
27-19-105	13h x 9.5d	75cl 26½oz	Preserving Jar and Clip Lid	12	16E2

Code	Dimensions in cm	Capacity	Description	Pack	GoldPlas® Rack Code
27-19-106	17h x 9.5d	1L 35¼oz	Preserving Jar and Clip Lid	12	16E3
27-19-107	22h x 11d	1.5L 52¼oz	Preserving Jar and Clip Lid	6	9E4
27-19-108	25h x 12d	2L 70½oz	Preserving Jar and Clip Lid	6	9E5
27-19-109	27h x 14d	3L 105½oz	Preserving Jar and Clip Lid	6	-

Clip jars must be fully disassembled before Dishwasher usage.



03-15-188

26-19-127

26-78-701

45-19-150

45-19-950

66-19-104

66-19-106

66-19-104
Mini Milk Bottle
with Flip Lid



Code	Dimensions in cm	Capacity	Description	Pack	GoldPlas® Rack Code
03-15-188	13h x 8d	45.5cl 16oz	Drinking Jam Jar (for Cold Beverages only)	12	-



Code	Dimensions in cm	Capacity	Description	Pack	GoldPlas® Rack Code
26-19-127	12.7h x 5.3d	15cl 5¼oz	Mini Milk Bottle (No Cap)	18	-
26-78-701	5.3d	-	Silver Cap for Mini Milk Bottle	18	-
26-78-702	5.3d	-	Gold Cap for Mini Milk Bottle	18	-
45-19-950	4.8d	-	Silver Lid for milk bottle 45-19-150	6	-
45-19-150	20.5h x 6.9d	50cl 17½oz	Milk Bottle	6	-
66-19-104	11.5h x 4.5d	8cl 2¾oz	Mini Bottle with Flip Lid	12	-
66-19-106	17h x 5.3d	15cl 5¼oz	Mini Bottle with Flip Lid	48	-



26-19-127
Mini Milk Bottle



45-19-150
Milk Bottle



Oils and Cruets



15-36-109



15-36-108



15-36-107



15-18-140



15-18-141



14-36-189



14-36-187

Ligne Normale
ITALY

Code	Dimensions in cm	Capacity	Description	Pack	GoldPlas® Rack Code
15-36-109	21.7h x 4.9d	12.5cl 4½oz	Bottle with silicon stainless steel pourer	12	-
15-36-108	26.1h x 5.8d	25cl 8¾oz	Bottle with silicon stainless steel pourer	12	-
15-36-107	31.3h x 6.8d	50cl 17½oz	Bottle with silicon stainless steel pourer	12	-
15-18-140	14h x 5.7d	10cl 3½oz	No.1 Square Mini Oil/Vinegar Bottle with borosilicate glass pourer and natural cork stopper •	24	-

Code	Dimensions in cm	Capacity	Description	Pack	GoldPlas® Rack Code
15-18-141	14.7h x 5.2d	10cl 3½oz	No.2 Round Mini Oil/Vinegar Bottle with borosilicate glass pourer and natural cork stopper •	24	-
14-36-189	14.2h x 7.5d	25cl 8¾oz	Optima Oil Bottle with Pourer	12	-
14-36-187	14.2h x 7.5d	25cl 8¾oz	Optima Vinegar Bottle with Pourer	12	-

*Oil/Vinegar Measurements includes Stoppers.



16-16-182

26-19-180

26-19-171

26-19-170



Code	Dimensions in cm	Capacity	Description	Pack	GoldPlas® Rack Code
16-16-182	13.3h x 7.4d	17cl 6oz	Oil/Vinegar with Stopper*	12	-



Code	Dimensions in cm	Capacity	Description	Pack	GoldPlas® Rack Code
26-19-180	32h x 7.8d	75cl 26½oz	Tall Oil Bottle Drizzler Includes Pourer	12	-
26-19-171	21.5h x 4.7d	25cl 8¾oz	Square Oil Bottle Drizzler	12	-
26-19-170	26.5h x 5.7d	50cl 17½oz	Square Oil Bottle Drizzler	12	-

CHEF SPECIALTIES

Pepper mill mechanisms are crafted from solid, cutlery grade stainless steel or ceramic to withstand the rigours of commercial use. Constructed with a spring tension system which allows them to be adjusted from very fine to cracked pepper.



51-84-102

51-84-106

51-14-105

Salt and Pepper Mills

Code	Dimensions in cm	Description	Pack	GoldPlas® Rack Code
51-84-102	9h	Baby Combi Pepper Mill/Salt Shaker Acrylic	1	-
51-84-106	17h	Gem Combi Pepper Mill/Salt Shaker Acrylic	1	-
51-14-105	14h	Lori Pepper Mill/Salt Shaker Set Acrylic & Chrome (Set of 2)	1	-



CrushGrind®



Stockholm, represents Scandinavian design traditions with its simplicity, minimalism and functionality. Each is clearly marked with S for Salt and P for pepper on the top. Stockholm has the CrushGrind® EasyFill feature, simply pull the stopper upwards and then you have a funnel shaped entrance for filling the spice. With easy adjustment to allow you to set the coarseness of your grind. Available in oak and walnut.

Stockholm, Oak and Walnut are available with the all FLIPPABLE S/P INDICATOR so that any mill can contain either Salt or Pepper and can easily be differentiated.



Code	Dimensions in cm	Description	Pack	GoldPlas® Rack Code
56-34-107	16.8h	Stockholm Oak with Flippable S & P Indicator	1	-
56-34-108	16.8h	Stockholm Walnut with Flippable S & P Indicator	1	-



56-34-105



56-34-109

Code	Dimensions in cm	Description	Pack	GoldPlas® Rack Code
56-34-105	11h	Stockholm Mini Oak with Flippable Salt & Pepper Indicator	1	-
56-34-109	11h	Stockholm Mini Steel with Flippable Salt & Pepper Indicator	1	-

All Wood items are not suitable for Dishwashers.





66-32-137
Senegal Bamboo Square Tray

66-32-129
66-32-130



66-32-137



66-32-138
66-32-139



Bamboo

Code	Dimensions in cm	Description	Pack	GoldPlas® Rack Code
66-32-129	29 x 19 x 1.8h	Gabon Bamboo Board	6	-
66-32-130	34 x 30 x 1.8h	Gabon Bamboo Board	6	-
66-32-138	21 x 15 x 1.6h	Senegal Bamboo Tray	6	-
66-32-139	29 x 18 x 1.6h	Senegal Bamboo Tray	6	-
66-32-137	26w	Senegal Bamboo Tray Square Tray	6	-



Stackable Wooden Boxes



Stackable Wooden Boxes

Code	Dimensions in cm	Description	Pack	GoldPlas® Rack Code
45-42-741	17 x 17 x 10h	Stackable White Wooden Box - 4 compartments •	1	-
45-42-743	17 x 17 x 10h	Stackable Green Wooden Box - 4 compartments •	1	-

All Wood items are not suitable for Dishwashers.



Fuel Cells - Hollowick - Fuel Cells made in USA.

- A non-flammable liquid fuel and considered non-hazardous.
- No wax mess to clean up. Clean simple operation.
- Costs just pennies per hour to burn.
- Eliminates thermal shock breakage commonly associated with the use of solid wax candles.



Code	Dimensions in cm	Capacity	Description	Pack	GoldPlas® Rack Code
61-97-108	3.8 x 2.1h	-	Fuel Cell 8 Hour Burn	180	-
61-97-126	5.1 x 3.8h	-	Fuel Cell 26 Hour Burn	60	-
61-97-136	6.5 x 4.4h	-	Fuel Cell 36 Hour Burn	24	-

Table Lighting



16-19-104



16-19-108



16-19-123



16-19-121



03-29-146



Code	Dimensions in cm	Capacity	Description	Pack	GoldPlas® Rack Code
16-19-104	10h	40cl 14oz	Bubble Ball	12	-
16-19-108	21h	370cl 134oz	Bubble Ball	4	-
16-19-123	6.5h x 6.5d	15cl 5¼oz	Roly Poly Votive	24	-
16-19-121	6.5h x 5.5d	9cl 3¼oz	Round	24	-
03-29-146	7.5d	9cl 3¼oz	Winchester Tealight	36	25E1



23-41-733



23-41-760



17-29-130



17-29-706



45-29-171



45-29-172



61-29-740



61-29-741



Code	Dimensions in cm	Capacity	Description	Pack	GoldPlas® Rack Code
23-41-733	8.2h x 7.8d	21cl 7½oz	Saphir (Tempered Glass)	72	-
23-41-760	8.2h x 7.8d	21cl 7½oz	Vermeil DX2000 (Tempered Glass)	72	25E1



Code	Dimensions in cm	Capacity	Description	Pack	GoldPlas® Rack Code
17-29-130	6.5h	-	Ribbed Votive Clear	24	-
17-29-706	6.5 x 6h	-	Satin White Votive •	24	-
45-29-171	6.2 x 6.2 x 6.2h	-	Tealight Holder Square Grey	36	36E1
45-29-172	6.2 x 6.2 x 6.2h	-	Tealight Holder Square Blue	36	36E1
61-29-740	7 x 7.3h	-	Thick Round Votive Red	12	-
61-29-741	7 x 7.3h	-	Thick Round Votive Amber	12	-

 17-29-706
Satin White
Votive

 61-29-741
Thick Round
Votive Amber

